

# Open Field

£1

June 2024



*The Northern Lights photographed over Laxton  
by Sam Harrison, 11th May 2024*

The monthly publication of the  
parish of Laxton & Moorhouse

[www.openfield.org.uk](http://www.openfield.org.uk)



**Priest in Charge**  
**Churchwardens**

LAXTON  
MOORHOUSE  
KNEESALL  
WELLOW  
WELLOW  
**Chairman**

Vacant

Mrs Brenda Noble 01777 870541  
Mr Simon Hill 01636 822777

Vacant

Mr Ben Wells 01623 861309

Mrs Jean Crofts

Vacant

**P.C.C:**

**Deanery contact number**

01636 650063

**Parish Council: Clerk**

Catherine Millward 01636 813387

**Parish Councillors: Chairman**

Mr Simon Hill 01636 822777

**Vice Chair**

Mr Jem Hill

**Members**

Mr Mark Hennell, Mr Stuart Rose,  
Mr Dave Sheard, Mrs Anna Moorhouse  
Mrs Rebecca Creighton

**Thoresby Estate Office**

01623 822301

**Magazine Editor**

Mrs Jean Hennell 01777 870276

**Magazine Advertising**

Mrs Joy Allison 01777 871506

Email: [advertising@openfield.org.uk](mailto:advertising@openfield.org.uk)

**Photography by / Photos from**

Janet Cooke, Helen Sheard, Lynda  
Moore, Stuart Rose, Sam Harrison,  
Diane Hunt, Dik & Joy Allison

**Open Field**

[www.openfield.org.uk](http://www.openfield.org.uk)

**We always welcome contributions and can help if you are  
not sure how to write what you want to say.**

**We believe all illustrations to be free to use. If anyone feels  
their image has been wrongly used, please get in touch.**

Contributions for the next edition to be with the Editor by **NOON  
ON 16th JUNE PLEASE. Earlier preferred.** You can send in  
your contributions at any time.

## A Message from our Churchwarden

In May we celebrated another of our traditional services when we held our Rogation Sunday service.

The service was conducted by the Rev. Alistair Littlewood, who also celebrated Holy Communion during the service. We were pleased to welcome friends from



Moorhouse, Kirton, Boughton, and Walesby to join us.

It was a lovely morning so, near the end of the service, we went outside into the churchyard and sang the last hymn.

Our next traditional service will be our August Service, which is Lammas Day. At Rogation we bless the land and the farms. At Lammas we bless the first sheaf of corn from the harvest.

At the moment we are going through the process of trying to claim off the insurance to fix the roof on the south side of the church.

The church will be open with people to welcome visitors on the day of our Open Gardens, so it will be an opportunity for anyone who wishes to come in and look around and find out about the history of our lovely old church.

*Brenda*

## Get Well Soon

We send very best wishes to two villagers this month who have both had short but unexpected trips to hospital. Johnny Godson is home now and we hope he will make a speedy and full recovery. We hear he was told to 'behave himself'!

Brian Cartlidge is also doing well following his return home.

## Congratulations Jake

Congratulations to Jake Noble on completing the London Marathon in the very impressive time of 4 hours 35 minutes . Even more fantastic is that together with his colleague Zoe Hunt they raised £4,000 for Daisy Young Lives vs Cancer charity.

Well done Jake !

*Margaret Noble*

The run was done in support of one of the students at his school, who has sadly now died.

## Congratulations Joan

93

We send special congratulations to Joan Weatherall, a long term resident of the village, who is celebrating her 93rd birthday this month. We hope she has a memorable day with her friends and family.

## Congratulations Tony

90

Congratulations to Tony Crothers of Egmonton, widower of the late Rosemary Crothers, neé Grundy, who celebrated his 90<sup>th</sup> birthday on 8th May. Laxton visitors who called to wish him happy birthday were pleased to see him looking so well and we hope he will enjoy many more special days. Sorry we missed giving Tony a mention last month.

## Forthcoming Dates

**Laxton Church Garden Fete** will be held at Blacksmith's Cottage again this year. Please note the date: Friday 12<sup>th</sup> July.

**Harvest Festival:** Friday 13<sup>th</sup> September in Church

**Harvest Produce Show and Competition:** Saturday 14<sup>th</sup> September



# Laxton Open Gardens, June 9th

Sunday 9<sup>th</sup> June is the date of the Open Gardens event in Laxton village between 1 - 4pm. We hope this event will raise much needed money for the Village Hall, which is a community asset. Funds pay for its upkeep, running costs and its ability to keep hire rates more than competitive in the locality.

We hope too, that our visitors will enjoy exploring the delights of this historic location, perhaps for the first time. After all, we have the church, the open fields, the visitor centre, the pinfold and the pub!

At the present moment we have five gardens listed as taking part, but we would welcome others. Let's showcase the village and show it off to its best advantage.

We would be very pleased if anyone could support the event by donating raffle prizes or taking a turn in the Village Hall serving tea and cakes. Any help whatsoever will be greatly appreciated.

Please let us know by contacting either  
Helen Sheard on **07905 161392** or Jean Hennell on **870276**.

*Helen*

## Laxton Harvest Weekend and Competition

This year's Harvest celebrations will take place over the weekend of 13<sup>th</sup> - 15<sup>th</sup> September. Full details will be published later, but we are giving the people who grow fruit, flowers or vegetables; cook jams or chutneys or make craft items for the competition forward notice of the classes. Please see the schedule later in the magazine.

All classes are open to everyone, wherever you live and we encourage you to have a go. It is a friendly village competition and the emphasis is on taking part. There are classes for adults and children. We encourage new villagers to enter, even if you have never done so before, and why not get your grandchildren having a go at some of the classes for them?

# LEE DOYLE

## Building Contractor

New Houses, Extensions,  
Groundworks, Roofing,  
Damp-proofing & Dry Lining,  
Paving & Patios, Minor Repairs.

10 Elm Tree Rise  
Kneesall  
Newark  
Notts



# Stuart Rose

DESIGNER AND MAKER OF  
ORNAMENTAL IRONWORK

SECURITY GRILLES, RAILINGS, SCROLLWORK & GATES FOR HOME  
& BUSINESS

GENERAL BLACKSMITHING

IRONWORK REPAIRS & WELDING



## Britnell Tree Services



### All Aspects of Tree Works

includes felling, crown reductions  
crown thinning, crown lifting, pollarding

### Gardening & Landscaping

Reliable & Trustworthy Fully Insured &  
Qualified

All works carried out to BS3998  
Call Will today for your free quote on

07821 342942 or 01636 702807 or  
email

BritnellTreeServices@gmail.com

MUSIC  
THEORY  
AND  
PIANO  
ROYAL  
SCHOOLS



Quality Paintings

or Drawings

# GRAHAM LAUGHTON B.A.

PICTURE  
FRAMING  
SERVICE &  
RESTORATION



01777 472885 or

07999 528397

grahamlaughton50@gmail.com

# Beeby Plumbing

All plumbing enquiries please call:

Guy Beeby

**07792 484876**

**01636 822103**

Oftec qualified.

Fully insured.

• Domestic Plumbing •

• Taps to Toilets Installation & Repair •

• Central Heating Installation & Repair •

• Oil Boiler Installation & Service •

No Gas Work

*guy.beeby@btinternet.com*

## **JUNE CONGRATULATIONS**

*Congratulations to everyone celebrating in June. The **birthday roll of honour** for this month is:*

*Joan Weatherall (93), Lucy Saxelby, Mary, Brian Cartlidge, Serena Cowland, Victoria Banks, Jessica Rose, Julie Bartle, Rebecca Creighton, Elaine Bedford, Oliver Noble*

***Anniversaries in June:** Christopher & Julia Banks, John & Brenda Chambers, Jonny & Lynnette Dinsdale, Dave & Joyce Stone, Mark & Amanda Hennell, Stuart & Sylvia Rose, George & Brenda Noble.*

*Very best wishes to everyone mentioned.*

*To anyone we may have missed, we wish you all a wonderful day and a happy and healthy year to come.*





# Village Hall News



The Village Hall Trustees hosted a very successful village party in the hall on May 4th. Our hall was turned into a colourful, disco-lit, night club for one night only and Maxine Gardner entertained us for free with songs from various decades.

Some of the dancing, perhaps unintentionally, also provided much merriment, as did the wigs and the 80s costumes! The food was magnificent, a hog roast supper, various salads, veggie options and mountains of cake.



The partygoers were welcomed with a cocktail at the door and the fun began as soon as they entered the hall. Not even the ear splitting fire alarm, going off as the excellent pork crackling was taken from the stove, stopped the fun. In fact it gave some of the dancers an opportunity to show their moves to the rhythm of the alarm. But what a relief when it stopped!

The atmosphere throughout the evening was great,

it even spilled out into a spontaneous street party when an extra table was set up outside. It was wonderful to see so many villagers having such a good time and supporting the village hall at the same time. Thank you to everyone who came and to



everyone who contributed to make the evening such a success.

The evening made £890.32, all of which will go towards keeping our lovely little village hall going as a function room for the whole village. It provides an excellent venue for private parties, christenings, engagement parties, weddings, funerals and training events. It is at the heart of the community. Please take advantage of this village facility. We are so lucky to still manage to keep it going when so many village halls are currently closing.



*Joan Cottee*

# Village Hall AGM, 30th May 2024

When looking through the Village Hall paperwork, past and present, I was surprised to discover that I joined the Village Hall Committee in 1997 and Roger joined us in 2000. We had a number of fund raising events over the years, but perhaps one of the most memorable was our Village Millennium Celebration, part of which was a village party and a hog roast!

It seems we have come full circle from our first village party, with a hog roast, to this year's village party, also with a hog roast. Perhaps it's appropriate that our time with the Village Hall Trustees should have both begun and ended with a hog roast party, because Roger and I intend to finally resign from the Trustees at the AGM this year.

As well as working for the community we have had a lot of fun over the years. We were privileged to work alongside some wonderful people who were and are devoted to the Laxton community. We know we are leaving your village hall in the good hands of younger and very enthusiastic trustees. Please continue to support them as you have supported us over the years.

*Joan Cottee*

## Coffee Morning Corner

Local coffee mornings in our neighbouring communities have fallen into a pattern, mostly so that they do not clash with each other. They would all welcome your support. Everyone is welcome to go along for coffee, cake, a chat, sometimes with extra items for sale, so take some cash and a bag with you.

1st June Kirton at 'Hopland Cottage', Kirton, 10.30am. Entry £2.50 includes coffee and cake. PLUS: Exotic cocktails at £1 per glass! Lots of stalls.

2nd Saturdays Egmonton Village Hall 10 - 12 (June 8th)

3rd Saturdays Laxton Village Hall, 10.30 - 12.30 (June 15th)

4th Saturdays Ossington Hut, 11 - 1 (25th May)

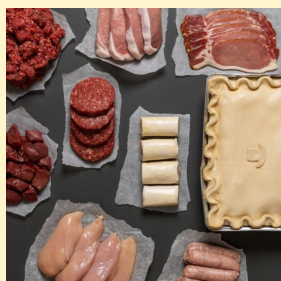


# **THE COUNTRY VICTUALLER BUTCHERS & BAKERS**

Award winning handmade pork pies,  
oven ready pies, cured bacon, free range pork  
and Longhorn Thoresby beef

Heritage recipes and a warm welcome await  
you at our Tuxford Pod.

- Order & Collect
- Free kerb side parking
- Daily hot food to go specials
- Loyalty card rewards
- Senior Citizens' 10% off Wednesday



Opening Hours:  
Tue - Fri 8am - 4pm, Sat 8am - 4pm  
Closed Sunday & Monday

**01777 874700**

Subscribe to our newsletter to receive online offers!

<https://thecountryvictualler.co.uk/newletter-subscription>

Nationwide delivery.

[thecountryvictualler.co.uk](https://thecountryvictualler.co.uk)

**ASHVALE ROAD, TUXFORD, NG22 0NH**



## Lucille Mawer

We were saddened to hear of the death of Lucille Mawer of Ossington, on Sunday 5<sup>th</sup> May. Lucille was well known to many in Laxton and was a reader of and occasional contributor to Open Field over the years.

Her funeral was held at Ollerton Crematorium on 24<sup>th</sup> May and was attended by some of her Laxton friends.

## Laxton Sports Field-Bonus Ball Draw

Following the sad news of the passing of Lucille Mawer we now have additional Bonus Ball numbers available.

Lucille was a very keen supporter of village life and supported the Sports Field by having 5 bonus ball numbers. These were 2, 29, 34, 37 and 44.

As a result we now have 8 of the 59 numbers available for anyone who would like an additional one or who would like to become a new member.

The available numbers are: **2, 29, 34, 37, 44. 51, 52, 53**

As a reminder, all proceeds go to supporting the Laxton Sport and Recreation Field facilities.

## Wellow Maypole Celebrations



A reminder to go along to the annual Wellow Maypole Celebrations, which will take place again this year on the late May Bank Holiday, 27th May, starting at 12 noon and continuing until 5pm.

# Nature Tales From Moorhouse

*We are delighted to welcome Paul Longmuir from Moorhouse, who has sent here this item and offered to write a monthly nature article for us.*

Please may I introduce myself, I'm Paul and live with my wife, Alex and two boys Connor and Max at Brookdale Farm, Moorhouse. We moved here 11 years ago and have renovated the house and settled into the area, but more importantly made use of much of our smallholding of 11 acres to attract as much wildlife, birds, trees, flowers and plants as possible.



In this feature, that I hope to update in 'Open Field' each month, I would like to share some observations on the various flora and fauna, insects and many creatures that reside or visit us here in Moorhouse. I find it fascinating and mind blowing to see how much has changed since we first moved here. It is simply the result of planting a small native woodland, digging a large pond, letting the brambles spread and natives do their thing.

Most people these days are well educated, aware, and understand the importance of biodiversity on our planet, however, not so many people are aware of the term "shifting baseline syndrome". Shifting baseline describes a gradual change in our accepted norms and expectations for the environment across generations. Our tolerance for environmental degradation increases and our expectations for the natural world are lowered. Something that I feel we should all be mindful of. But that's enough of the big words copied from Google!!

The bottom line is, I'm no expert or academic, I've just grown-up all my life loving nature and wildlife and take great care every day to appreciate it and do my bit to make a positive difference and take in all its beauty and sounds.

Spring began here in Moorhouse like most other gardens in spring, appreciating the hope-giving snowdrops and daffodils and the fur covered waxy flowers emerging on the beautiful magnolia. The frog and toad spawn appearing in the pond this spring was much less than

previous years and our small pond had no toad spawn at all, which is a concern, but hopefully just a one-off.

Observing the amazing tiny purple flowers on the hazel bushes at the end of February, is a delight. They are the female part of the bush that produces a flower



on the end of a small bud, literally measuring a centimetre across. You have to really look hard, but they are worth it.

Snails are certainly plentiful this year ... no surprise! We had thousands and thousands around the paths in the wood of all shapes, sizes and varieties.



Fieldfares and redwing, who migrate to the UK to winter feed on seeds, berries and windfall apples and pears, were still in abundance and finally departed at the end of March, back up to Northern Europe where they breed.

Our resident Moorhen was quick out of the blocks this year, laying her first clutch of eggs by the end of February, resulting in five beautiful black balls of fluffy chicks by mid-



March. Unfortunately though, as I have quickly discovered, more wildlife attracts more predators and those poor little chicks vanished in a day. They were possibly taken by the same heron that got most of my fish, or possibly the mink, fox, sparrowhawk, crow, kestrel, owl? Who knows? Any could be the guilty party. She has since tried two further clutches unsuccessfully; the eggs quickly succumbing to the carrion crow.

*Paul Longmuir*

# Laxton History Group



Members turned out in force to enjoy a visit from Dr Karen Winyard at the May meeting. Karen is a member of the Friends of Nottinghamshire Archives (FONA), and was one of a small group who researched some previously uncatalogued papers relating to the Rufford Estate, which had been deposited at the Archives.

Armed with the results of their work, Karen and her colleagues each took a topic and wrote up what they had discovered. It would have been much like the process LHG members went through writing up their extensive research of a 20 year period of the history of Laxton from the Manvers Collection at the University of Nottingham for the Lottery funded project. The FONA work was collected together in a book and published recently by them. LHG has a copy and members can borrow this or any other book from the Group Library free of charge.

Karen started with a trunk of papers attributed to 'Augustus'. This led her into the bizarre world of not only the Savile family, but also the Lumley family, who were the Lords Scarbrough. There were themes through a number of generations - illegitimacy which prevented line of succession following the familiar path, childlessness, early death and legal efforts to ensure that the Rufford Estate and wealth did not get lost in the Scarbrough estate.



Several of those who inherited the estate died soon afterwards and did not have much opportunity to enjoy it. Many of those who succeeded to the estate were called John, adding the complication familiar to researchers of family history.

One character, who it seemed was universally disliked, was known as 'Black Jack'. He was passionately keen on horse racing and developed a successful stud at Rufford. His greatest triumph was to win the Derby with Cremorne. He had a top class specialist architect design the stable block, which remains today as the area where the shops are situated.



On his death he decreed that the stud should be sold, but his heir bought back Cremorne and some of the older breeding mares, which he kept in retirement at Rufford. The grave of Cremorne can be found in the grounds in the area with the pet graves.

Having failed to decide on a more remote venue for a summer outing, members have opted to visit Doddington Hall. A group of 19 members will visit the Hall on 24th July, when they will have a short guided tour of the Hall as well as being able to enjoy walking in the gardens and admiring the biennial sculpture exhibition. Everyone now hopes for lovely weather to make the visit perfect.

At the AGM, Helen Sheard took over from Jean as Programme Secretary. She has big shoes to fill after Jean managed to find entertaining speakers and visits for us for a number of years, but she is already filling out the 2025 programme with a mix of old favourites and new speakers.

If you would like to join us at any time, please do come along. Just one attendance makes you a member for the remainder of the year. There is no fee and you will be kept up to date with plans. There is just a £3 payment at the door which includes admission and our well known selection of 'nice' biscuits.

## **Kirton Coffee Morning**

**Saturday, June 1st**

**at 'Hopland Cottage', Kirton, 10.30am.**

**Entry £2.50 - includes Coffee and Cake etc.**

**EXTRA ATTRACTION- Gav's exotic cocktails at £1 per glass!**

**Raffle, Cakes, Bring and Buy, Bric a Brac, Plants.**

**Everybody Welcome !**

**Proceeds split between Kirton Church and the Notts  
and Lincs Air Ambulance !**

# News from the Museums of Tuxford

Both Museums are busy with new projects. The Walks of Life has improvements to the rural barn with a new floor and electricity, thanks to the U.K.S.P.F grant, enabling us to enhance our displays and hold events that benefit the community. We are exploring the

history of individual carts starting with the scout cart. We found the troop still exists and we have been in touch. We are awaiting their history to display alongside it. We are taking part in the vigil at the war memorial on the 80<sup>th</sup> anniversary of D Day, recognising the sacrifices of those affected by war. If it was not for the bravery of those who fought, so many giving their lives, we would probably be leading a very different life today.



A Tuxford hero from WWI was Fred Curry, who served from 1915 as a gunner, riding the lead horse of a gun team, pulling a gun in tow. An incredibly dangerous job, not only controlling the team under very difficult and frightening conditions, but also the gun teams were a prime target for the Germans to stop the guns getting to the Front. His grandson, writing about him, said he regretted not saving his spurs.

The Museum of the Horse has a display of military spurs worn by brave men in wars from the 17th century to the 20th century. These were terrible times, so the spurs we like to remember are dancing spurs. These were decorated spurs worn by officers in the days of Waterloo. Wives were taken to war, and balls were held before battle.



These spurs looked like riding spurs but the rowels were not spiked. They were smooth so they didn't tear the ladies skirts if they got caught up in them.

Our new exhibition is on until September.

**For the Walks of Life Museum, please contact Diane on 01777 872776**

**For the Museum of the Horse, please contact Sally on 01777 838234**



# Northern Lights Over Laxton

Many local people were astounded and delighted to see the Northern Lights clearly visible over Laxton on 11th May. There have been occasions in the relatively recent past when we were told they might be visible, but cloud cover has prevented them being seen or they have failed to appear. On this occasion they certainly made up for previous disappointments quite spectacularly. The only down side was that they were at their most visible in the early hours of the morning.

The cause was a result of 4 coronal mass ejections, which merged and formed a 'cannibal', which was directed towards Earth. The warning of geomagnetic disruption was the first of its type issued since 2005. The activity came from an unusually large sunspot 120,000 miles across. When the warning was issued, the timing was uncertain. This influences where the spectacle will be visible, and the prediction was that the lights could be seen as far south as southern Spain.

Thanks to readers who sent in pictures for the magazine.

\* Sunday 2nd June  
2-5pm \*



\* Free Entry \*

## Burnmoor Farm Garden Party

to support MacMillan Cancer Research

**CAKES, PLANTS, CRAFTS**  
**EVERYONE WELCOME!**



## MAY SERVICES IN OUR VILLAGE CHURCHES

**HC** = Holy Communion **EP** = Evening Prayer  
**MP** = Morning Prayer, **Es** = Evensong **WfA** = Worship for All  
**WS** = Word

### 2nd June

10.30am	Laxton	HC	Rev Margaret
4.00pm	Wellow	EP	Heather B

### 9th June

10.30am	Kirton	HC	Rev Alistair
---------	--------	----	--------------

### 16th June

10.00am	Walesby	HC	Rev Vaughan
10.30am	Wellow	HC	Rev Margaret

### 23rd June

**No services**


### 30th June

10.30am	Kneesall	Summer Service	?
---------	----------	----------------	---

No services in Moorhouse or Egmonton in June

### 7th July

10.30am	Laxton	HC	Rev Alistair
4.00pm	Wellow	EP	Heather B

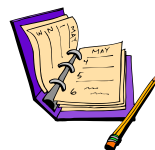


# *DATES FOR YOUR DIARY*

## **May**

Mon 27<sup>th</sup> Wellow Maypole Celebrations

Tues 28<sup>th</sup> Parish Council



## **June**

Sun 2<sup>nd</sup> Egmonton Garden Party for MacMillan

Sun 9<sup>th</sup> Laxton Open Gardens

Weds 12<sup>th</sup> WI

Sat 15<sup>th</sup> Community Coffee Morning

Weds 24<sup>th</sup> History Group Outing to Doddington Hall

**NB No Garden Party this year at Moorhouse**

## **Forward Planning:**

### **July**

Fri 12<sup>th</sup> Laxton Garden Fête

### **September**

13<sup>th</sup> - 15<sup>th</sup> *Laxton Harvest Weekend*

## **Regular Events:**

*Parish Council 4th Tuesday of January, March, May, July, September and November*

**Copy Date for JULY 2024 edition:  
12 noon, 16th JUNE 2024**

*Please let us have your contributions in good time. We do what we can to include last minute items, but it is not always possible. Late arrivals are unlikely to make it into print.*



# G.D. HALL LTD

(Independent Funeral Directors)

Newark Road  
TUXFORD, Newark  
Nottinghamshire  
NG22 0NA

13 Bridgegate  
Retford  
Nottinghamshire  
DN22 6AE

Tel. 01777 872929

Tel: 01777 701222

Email: [info@gdhallfunerals.co.uk](mailto:info@gdhallfunerals.co.uk) Web: [www.gdhallfunerals.co.uk](http://www.gdhallfunerals.co.uk)

Private chapel of rest  
24 hour service

Golden Charter pre-payment plans available  
SAIF Approved

Personal Visits to your home  
**Mobile 0797 257 6020**

## New Hill Fruit & Veg



Fresh seasonal fruit and vegetables  
delivered to your door

Call or Message: 07928 503467  
Email: [newhillfruitandveg@yahoo.com](mailto:newhillfruitandveg@yahoo.com)

With free delivery to Laxton and surrounding villages every Monday and Thursday, why not call now to book your fresh fruit, vegetable and bread delivery slot or Find us on Facebook to see our list of produce and any daily offers. Alternatively you can visit us at Clovelly, New Hill, Walesby, NG22 9PB Or Call 07928 503467

### HERE'S A SMALL SELECTION OF OUR PRODUCE:

- |                     |                |        |                                  |
|---------------------|----------------|--------|----------------------------------|
| .Potatoes           | .Lettuce       | .Eggs  | .Pre set Fruit & Vegetable Boxes |
| .Carrots            | .Tomatoes      | .Bread | £12 Essentials Box               |
| .Cabbage            | .Cucumber      | .Cakes | £16 Family Box                   |
| .Broccoli           | .Peppers       |        |                                  |
| .Red & White Onions | .Spring Onions |        |                                  |
| .Mushrooms          | .Soft Fruits   |        |                                  |
| .Courgettes         | .Apples        |        |                                  |
| .Sweet Potatoes     | .Satsumas      |        |                                  |
| .Baby leaf Spinach  | .Pears         |        |                                  |
| .Mange Tout         | .Bananas       |        |                                  |
| .Celery             | .Grapes        |        |                                  |
| .Garlic Bulbs.      | .Local Honey   |        |                                  |

We are now proud to be working along side Atherleys Bakery of Farnsfield, offering a range of fresh baked bread and cakes by pre order only.

ORDER BY PHONE, TEXT,  
FACEBOOK MESSENGER OR EMAIL

**Deliveries now subject to a £1 charge.**

At our monthly meeting the President welcomed everyone. The result of our voting for the Resolution on "Dental Health Matters" at the national AGM in London has been sent to our link delegate for her to vote on our behalf.

Last month Lesley's poem, with which she won the Canada Cup at the Spring Council meeting, was printed in our monthly county newsletter, the Hornblower. This month it was Anna's turn with a photo of her being presented with her prize for winning the competition for "Hats Off".

This month there will be a coffee morning at County House with a sale of craft items etc.

In June members have been invited to attend a demonstration by Clarins, the natural-based skincare company, at John Lewis in Nottingham followed by afternoon tea.

Members had a discussion on different places they would like to go for our outing in August.

Thinking of Christmas, we once again have received an appeal on behalf of "Teams 4Us" to knit hats, mittens and gloves for children in



Romania, Ukraine, Bosnia and Belarus. These are taken by the charity by lorry in time for Christmas.

Members were thanked for helping with our Bingo Night in April. It seemed everyone enjoyed it and it was a fun

night. A total of £305 was made, which will go towards paying for our speakers and Village Hall hire.

We decided we would have a Fashion Show later in the year.

Our speaker for the evening was our friend Sue Floyd, whose subject

# Usedgardenmachinery.co.uk

Formerly of Beacon Court, Ollerton  
All pre season service work undertaken  
Free collection and delivery  
Ring Alan for all enquiries

**T: 01623 860343**

**M: 07594 198646**

## Mobility Scooter Repair Service

### Robert Paling Boiler Services

**07849747500**

**robpalingboilerservices@  
yahoo.com**

- Oil Boiler Servicing and Repairs
- Oil Boiler installation and commissioning
- Oil Tank Installation
- Emergency Call Outs
- Fully Insured
- Oftec Registered

### Corrine Parkes

Your local weight loss consultant

**121 Diet by Cambridge  
Weight Plan**

- Virtual or face to face consultations
- Special new client discounts
- Free first consultation

**Contact me today**

**07857 187237**

**corrine.parkes121diet@gmail.com**



## Tuxford Lawnmower Centre Ltd



*Specialist in all types of Garden Machinery*

**Sales, Service, Spares & Repairs**

**Tel 01522 779110**

**Come & Visit our Showroom Today!**

Ashcroft, Gainsborough Rd, Gorton, NG23 7HX

**www.tuxfordlawnmowercentre.co.uk**

**info@tuxfordlawnmowercentre.co.uk**



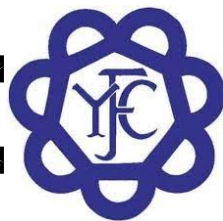


for the evening was “The Houses of the Dukeries”. This covered Thoresby, Clumber, Worksop and Welbeck.

Sue went back through the years telling us who owned which and how they came down through the generations. Some of the houses were sold off if no heir could be found or if there was no money. Some of the houses were stripped of the fine furniture and artworks,

etc. It was very interesting to see the pictures of the houses years ago as well as the people, the insides of the houses and the furniture and artwork.

## Tuxford Young Farmers



This month Tuxford Young Farmers we have done many things! A big thanks to Beth, Liam and Jem for running a stock judging competition. We all got a taste of what stock show judging is like.

We then had a ‘Curve’ module on the future of farming from Issabel Chen. Curve modules have been designed especially for Young Farmers’ Clubs to help members get the very best out of belonging. They are fun, interactive workshops which explore everything from mental health to food waste or plastic pollution. They are designed to be flexible so that each club can adapt them to suit their needs.

The next two weeks were all spent on preparation for Newark Show. At Newark Show we presented a film and some information about our club; who is involved and how you can get involved! Well done to everyone who took part in our participation in the Newark Show.

Well done also to all of our members who submitted entries based on our nominated country for this year’s theme. This year the country was France. We had lots of entries ranging from cakes and cupcakes to big statues made out of wood and metal.

Finally, in mid May, we went on a 10 kilometre bike ride around Sherwood Pines.

*Amelia*

## **HILLCREST: Equestrian Services**

- |                                                    |                                                          |
|----------------------------------------------------|----------------------------------------------------------|
| <input checked="" type="checkbox"/> Full livery    | <input checked="" type="checkbox"/> Riding lessons       |
| <input checked="" type="checkbox"/> Breaking       | <input checked="" type="checkbox"/> Secure               |
| <input checked="" type="checkbox"/> School livery  | <input checked="" type="checkbox"/> CCTV                 |
| <input checked="" type="checkbox"/> Rehab stabling | <input checked="" type="checkbox"/> BHS Regd.            |
| <input checked="" type="checkbox"/> Holiday livery | <input checked="" type="checkbox"/> Qualified instructor |
| <input checked="" type="checkbox"/> Selling livery | <input checked="" type="checkbox"/> Fully insured        |

Please phone or see web site  
for further information

**Tel: 07359 141 051**

[www.hillcrests.co.uk](http://www.hillcrests.co.uk)

email: [hillcrests@outlook.com](mailto:hillcrests@outlook.com)

## **HILLCREST: Gardening Centre**

- |                                                                                                   |                                                                                                     |
|---------------------------------------------------------------------------------------------------|-----------------------------------------------------------------------------------------------------|
|  Fertiliser       |  Bedding plants    |
|  Compost        |  Hanging baskets |
|  Seeds & bulbs  |  Giftware        |
|  Shrubs & trees |  Fruit & Veg     |

**Everything for your garden:**

**Open from 9am, closed Tues & Weds**

(for more details see web site)

**Tel: 07576 140 107**

[www.hillcrests.co.uk](http://www.hillcrests.co.uk)

**Now  
Open**



**St Michael the Archangel, Laxton**  
**Harvest Produce Show and Competition**  
**September 14<sup>th</sup> 2024**



**Classes**

**Class 1**

- A 3 potatoes
- B 3 onions
- C 3 beetroot
- D 3 leeks
- E 3 carrots
- F 1 marrow
- G 1 pumpkin
- H 3 tomatoes
- I 3 runner beans
- J Any other produce

**Class 2**

- A 3 eating apples
- B 3 cooking apples
- C 3 pears

**Class 3**

- A Jar of chutney
- E Jar of jam
- F Jar of jelly
- H Jar of lemon curd

**Class 4**

- A Victoria sandwich cake (no cream)

- B Decorated sandwich cake (any flavour)
- C Fruit cake
- D Plate fruit pie
- E 4 small cakes (buns)
- F 4 small sweet pastries
- G 4 fruit scones
- H 4 cheese scones
- I 4 tray bakes

**Class 5 - Photograph**

- A A Country Scene
- B It's Spring Time
- C A wild creature
- E Picture suitable for the cover of 'Open Field'

**Class 6**

**Flower Arrangement**

- A Hydrangea head in a vase
- B Single stem rose in a vase
- C Bowl of floating flowers
- D One bloom, one veg
- E Autumn Arrangement

**CRAFT**

**Class 7**

Craft item, any medium, made in the last year

**CHILDREN'S COMPETITIONS:**

**Class 8 (up to 6 years)**

- A A Painted Flower Pot
- B Vegetable or fruit sculpture
- C Harvest Collage
- D A Jar of Flowers

**Class 9 (7 to 11 years)**

- A A Painting of Harvest
- B Vegetable or fruit sculpture
- C Model from Lego or similar
- D Hand made greetings card

We welcome additional donations of produce, preserves or home baking for auction, which is held in church at 5.00pm after the service. These can be left in church on the **Saturday, or Sunday of Harvest Weekend from 3:30pm** when the winning entries may also be viewed. **We will also be collecting non-perishable gifts for a local Food Bank.**

**This event will support general Church funds and a local Food Bank**

# Milton Mausoleum

**NEW DATE!! Friday 14th June**  
**Midsummer Garden Party**  
**at Lound Hall 12.00 until 4.pm.**

We are excited to be working with Lound Hall Estate again fundraising for the Mausoleum. This year they are hosting a garden party within the beautiful grounds of **Lound Hall, Lound Hall Estate, Bevercotes, Retford DN22 8DF.**



The ticket price from 1st June is £10 per person. Reduced prices for children. There will be refreshments, Pimms & Prosecco bar, several select stalls, talks in the Hall, live music & more. For your early bird tickets please click on the QR code link and proceed or contact **<http://Friendsofmiltonmausoleum.org.uk>**



**Sat. 22nd June Summer Concert at the Mausoleum**  
**7pm** - with our customary wine & canapes on the lawn.  
Music by The Harmonix a cappella group.  
For your tickets please phone **07708 042065** or **07791 527569** or contact us via  
**<http://Friendsofmiltonmausoleum.org.uk>**

**Sat. 9<sup>th</sup> November Christmas Fayre at the Mausoleum.** Our spectacular Fayre returns featuring quality stalls with excellent gift ideas. Hot & cold refreshments available. Free entry. Tours of the monument room. More information to follow.

**Sat. 7<sup>th</sup> December Winter Music.** Carols at the Mausoleum. Our very popular seasonal event. It is never too early to book your place!

*Jenny Foulds*

**The Milton Mausoleum is cared for by the Churches Conservation Trust**  
Milton Mausoleum, The Avenue, Milton NG22 0PW



Ivy Cottage B&B . Main Street . Laxton . Nottinghamshire  
NG22 0NU . 01777 871254 . [www.the-goathouse.co.uk](http://www.the-goathouse.co.uk)

## VINCE DODD SERVICE & MOT

**Sutton-on-Trent  
MOT Testing**

☆ Servicing ☆ Repairs  
☆ Tyres ☆ Air Con

**01636 821200**

**Hall Farm Stocks a Wide  
Range of Wild Bird Products,  
Accessories & More**

**COFFEE LOUNGE  
NOW OPEN!**

Serving Coffee, Cake and Light Lunches

**OPENING HOURS:**  
Mon – Fri 7:30am – 5pm  
Sat 8am – 3pm  
Sun CLOSED

**The Grain Store, Wadnall Lane, Weston, NG23 6SY**  
(Behind the Great Wall Chinese)  
Tel: 01636 821232 [www.seedtofeed.co.uk](http://www.seedtofeed.co.uk)

**@SeedToFeed.co.uk**  
**@buybirdseed**  
**@hallfarmweston**

**07999 489624**



## Kitchen & Furniture Refurbishments

**We Spray:**

Kitchens, Free-Standing Furniture,  
Fitted Furniture, Wood, MDF & Paint Grade Vinyl

**25 Years Experience**

Contact: Darren  
Our Email: [scopesprayservices@gmail.com](mailto:scopesprayservices@gmail.com)  
Find us on Facebook: Scope Spray Services

## Wellow Heritage Talks

Denis Hill has sent us the following list of talks and events being given in the Old Schoolroom at Wellow over the coming months.

- 23rd May: Talk entitled 'What is a Witch' by Laura Simpson.  
Schoolroom at 7.30pm
- 9th July: Wellow Village Heritage Walk. Meet at the  
Schoolroom at 2.00pm
- 11th July: Talk entitled 'Two Shires' by Ted Gray. Schoolroom  
at 7.30pm
- 7th September: Talk entitled 'The Dukeries' by Denis Hill. Schoolroom  
at 12.00 noon
- 7th September. Wellow Village Heritage Walk. Meet at the  
Schoolroom at 1.30pm

If you would like to come along to any of these talks or join a walk, please send me an email to [denishill1066@gmail.com](mailto:denishill1066@gmail.com) and I'll reserve a place for you.

Looking forward to hearing from you.

*Denis Hill*

On behalf of the Wellow Heritage & Tourism Group

## Historic Building Mythbusting

Southwell Minster will be hosting an afternoon with Dr James Wright, FSA Buildings Archaeologist, in the State Chamber on 26th June. He will discuss myths and investigate the underlying truths behind them. Sometimes the realities hiding behind the stories are even more interesting, romantic, and exciting than the myth itself...

Tickets cost £8, including refreshments, and are available now from The Cathedral Shop (in person or 01636 812933) or online from the Minster web site.

NB check the new parking periods and charges in Southwell if attending.



## Sports Field Bonus Ball Weekly Draw

20/4/24	32	Chantelle/Rounders
27/4/24	53	ROLLOVER
4/5/24	10	Stuart Rose
11/5/24	22	John/Carol

Thank you to Michael Manning for providing the information above. He is starting to pick up the reins of the jobs he usually does and has written about the Sports & Recreation Field this month. Your recent continuing patience is appreciated while he continues his recovery. Thank you.

**Numbers 2, 29, 34, 37, 44. 51, 52, 53 are available.** All proceeds go to supporting the Laxton Sport and Recreation Field facilities.

### OSSINGTON EVENTS

#### OPEN GARDEN under the NGS scheme

The Open Garden event will take place at Ossington House on Sunday 30th June, 2 - 5pm with refreshments in the Hut. (£6 entry)

#### GARDEN PARTY

Ossington House on  
Saturday 6th July from 3pm

Come and join in the fun and games with bric-a brac, plants and cakes to buy and refreshments to enjoy



**Mark Brisendon**  
Heating Engineer

T: 01636 678036  
M: 07734 450695

Oil boiler service,  
repair and installations



OFTEC registered

## **“FEET FIRST”**

**MOBILE  
CHIROPODY SERVICES**

**Sharon Foster**  
**M.Inst.Ch.P.**  
**HPC Registered No:**  
**CH18101**

**Telephone**  
**Mobile: 07946 587190**  
**for a home visit**

## **Sherwood Forest Rotary**

**Supporting the Local  
Community**

**07711 802683**  
**Meeting every 2nd**  
**Wednesday at**  
**Ollerton House Hotel**

**Visitors always welcome**  
**[www.rotary.org/1220](http://www.rotary.org/1220)**

## **Stan The Sweep**

**Local Professional Vacuum  
Chimney Sweep**

*Solid Fuel, Oil and Gas, Aga,  
Stove Bricks, Glass & Rope  
supplied & fitted, Bird guards,  
Chimney liners, Pots, Specialist  
equipment for sweeping wood  
burners & liners. Certificate  
issued.*

*No Mess & fully insured  
Contact Stan Hutchinson on:*

**07831 661304**  
**01636 821466**

**[Stan@StanTheSweep.co.uk](mailto:Stan@StanTheSweep.co.uk)**



Member of the  
guild of master  
sweeps

## **G.R. GRIMES & SONS**

**SOLID FUEL & GAS MERCHANTS**



***Competitive Prices***

Ring for a Quote

Tel:

**01777 228273**

## Advice on State Pensions

The State Pension is a regular payment from the government most people can claim when they reach State Pension age. Your State Pension age depends on when you were born. You can find out your State Pension age by using the calculator on the GOV.UK website.

The amount of State Pension you'll get depends on how many 'qualifying' years of National Insurance payments you have. This includes National Insurance contributions that you pay when you are working and contributions that are credited to you when you are unable to work. There has been lots in the media lately about 'topping up' gaps in your national insurance contributions, we talk more about this below.

You can get an estimate of how much State Pension you could get on the GOV.UK. This is called a State Pension Statement. If you do not have internet access we can help at your local office to check this for you.

### Check if you've been underpaid

If you reached State Pension age before April 2016, you might have been underpaid if you're either:

- a woman and married, divorced or widowed
- over 80 years old and getting a State Pension of less than £85 a week - it doesn't matter whether you're married or not

If you're a man and under 80 years old, it's unlikely you'll have been underpaid - but if you think you're owed money, you should check.

If you've been underpaid, the DWP will probably have contacted you and sent you a payment. If they haven't contacted you, you might need to make a claim.

You can check if you've been underpaid and whether you need to make a claim by contacting the Pension Service. Check how to contact the Pension Service on GOV.UK or you can visit us at your local office and we can assist you to do this.

### Getting qualifying years

The amount of State Pension you get depends on your National Insurance record. Your National Insurance record includes National

Insurance contributions that you pay when you are working and contributions that are credited to you when you are unable to work.

For example, you can get National Insurance credits when you're claiming Employment and Support Allowance or Jobseeker's Allowance, or if you have caring responsibilities. Your record can also include voluntary contributions that you choose to pay to cover gaps when you are not working or getting credits.

When you reach State Pension age, you can claim a State Pension if you've paid or been credited with enough National Insurance contributions during your working life. What you get depends on how many 'qualifying years' of National Insurance contributions you have. Each tax year (6 April to 5 April) that you pay or are credited with National Insurance contributions counts as a qualifying year, provided you earn or are credited with earnings of at least a minimum amount. This amount changes every year.

## **Making voluntary National Insurance contributions**

If you don't have enough qualifying years to get a full State Pension, you may be able to make up gaps in your National Insurance contribution record by paying voluntary contributions.

There is a time limit for doing this. You can find out more about voluntary contributions and the time limits for paying them on GOV.UK. Or visit us at your local office for help.

If you require further assistance or advice on this issue or any other problem you can contact us on the details below.

### **In person**

Newark office Tues/Thurs 9.30 - 2.30, Castle House NG24 1BY

Ollerton office Mon/Weds 9.30 - 2.30, 5 Forest Court, NG22 9PL

We also have a number of outreaches throughout the local area which may be closer to home - to access the dates and times check online at our website or call us on the below number.

Phone our local office on **01623 861769** (you may be offered a call back)

**Website [www.sn-ca.org.uk](http://www.sn-ca.org.uk)**

# E Gill & Sons

## *Funeral Directors*

E Gill & Sons are proud to have provided care and advice to families in the Newark and District area for over 100 years

**24 Hour Personal Care**  
**Prepaid Funeral Plans Available**

**Newark and District**

**01636 677461**



**egillandsons.co.uk**



## Plumbing and Heating

Alan Moorhouse

- Oil boiler installation, service & repair
- Oil tank installation & pipework
- Bathroom installation
- Sealed hot water systems
- Power flushing



**Email: [alsperfectplumbs@gmail.com](mailto:alsperfectplumbs@gmail.com)**

**Tel: 07854 069529**



OFTEC registered

## Advertising in 'Open Field'

Standard 1/6 page box: £30 p.a.(colour) £15 p.a.(B&W).

Larger sizes pro rata, e.g. £45 p.a. for 1/2 page (B&W)

Please contact [advertising@openfield.org.uk](mailto:advertising@openfield.org.uk) or  
call **01777 871506** for details and info on web pages / links.



# Egmanton Village Hall

[www.egmantonvillagehall.org.uk](http://www.egmantonvillagehall.org.uk) / 01777 871171

Please check the EVH web site or call for latest details.

- ♦ **Yoga** – with Karen Baker Mondays, 7pm - 8.15pm  
Email [karenbaker321@outlook.com](mailto:karenbaker321@outlook.com) mobile **07399 669380**
- ♦ **Pilates** - Thursdays from 5:30pm - 6.30pm with Holly Rye.  
Contact **07415436001** Email [holly-rye@hotmail.co.uk](mailto:holly-rye@hotmail.co.uk)
- ♦ **Egmanton WI** - Third Thursdays in the Hall
- ♦ **Coffee Morning: JUNE 8th** 10 - 12 then every second Saturday of the month. All welcome

*All events appear on the web site - see above*

## Reporting Potholes

A reminder about the pot hole reporting contact details are:

[www.nottinghamshire.gov.uk/transport/roads/potholes/report-a-pothole](http://www.nottinghamshire.gov.uk/transport/roads/potholes/report-a-pothole)

Or ring Customer Services on 0300 500 8080



## Laxton Defibrillator

The defibrillator in the Visitor Centre, is always accessible as neither the Visitor Centre door nor the cabinet housing is locked. Please do remember that the defibrillator must only be used once authorised by a call to 999.

*Michael Manning*

## Laxton Sports Field Bonus Ball Weekly Draw

We have 8 of the 59 numbers available for anyone who would like an additional one or a new number. The numbers are: 2, 29, 34, 37, 44, 51, 52, and 53. Please contact Michael on **01777 870844**

As a reminder, all proceeds go to supporting the Laxton Sport and Recreation Field facilities.

*Michael*

# Useful Contact Details

## Defibrillator Contacts:

Neil Randall      01777 871229 & 07710 398745, evenings and weekends  
Mark Hennell      07812 908316, evenings  
Stuart Rose      07939 228353, as required  
Jeanette Geldard      07956 959135, daytime in Kneesall,  
                                         evenings / weekends  
Anne-Marie & Geoff Rose      07961 933290 / 07957 991002, as required

## Police

Sgt 2949 Christian Hurley, Sherwood Neighbourhood Policing Team,  
Ollerton Police Station

PC Gary Sipson 07525 226575 or 101 x 800 7673

Email : [gary.sipson@nottinghamshire.pnn.police.uk](mailto:gary.sipson@nottinghamshire.pnn.police.uk)

PC2548 Deborah Bakin supported by  
PCSO 8524 Richard Dunn at Southwell

07595 074292

Web, showing other contacts: [www.nottinghamshire.pnn.police.uk](http://www.nottinghamshire.pnn.police.uk)

Danger to life or crime in progress	999
Otherwise police switchboard	101
Crimestoppers (anonymous crime reports)	0800 555111

## Medical

Tuxford Medical Centre	01777 870203
Sutton-on-Trent Surgery	01636 821023
Ollerton Surgery - Middleton Lodge Practice	01623 703266
Newark Hospital	01636 681681
Bassetlaw Hospital	01909 500990
King's Mill Hospital	01623 622515

**Cardiac Arrest? Say “Alexa Activate Emergency CPR” to an Alexa device**

Fire Safety Advice (Tuxford Fire Station)      01777 870381  
MP Mr Robert Jenrick: [robert.jenrick.mp@parliament.uk](mailto:robert.jenrick.mp@parliament.uk) 01636 612 837  
County Councillor: [cllr.mike.pringle@nottscc.gov.uk](mailto:cllr.mike.pringle@nottscc.gov.uk) 0115 977 5661  
Parish Council website: [www.laxtonandmoorhouseparishcouncil.co.uk](http://www.laxtonandmoorhouseparishcouncil.co.uk)

# Open Gardens Laxton

Sunday 9th June 2024

1 pm until 4 pm    5 Gardens.    £5 per adult

Raising funds for Laxton Village Hall

Children free and dogs on leads welcome.

Refreshments in the Village Hall. Plant stall.

Ample car parking. Some gardens have steps and slopes.



The Northern  
Lights over  
Laxton,  
photographed  
by Lynda  
Moore on  
11th May  
2024