

# Open Field

£1

August 2024



*The Doyle Family and Friends in Egmonton on the Michael  
Ducksbury Memorial Vintage Tractor Road Run, 7th July 2024*

The monthly publication of the  
parish of Laxton & Moorhouse

[www.openfield.org.uk](http://www.openfield.org.uk)



**Priest in Charge**  
**Churchwardens**

LAXTON  
MOORHOUSE  
KNEESALL  
WELLOW  
WELLOW

Vacant

Mrs Brenda Noble 01777 870541  
Mr Simon Hill 01636 822777

Vacant

Mr Ben Wells 01623 861309

Mrs Jean Crofts

Vacant

**P.C.C:**

**Chairman**

**Deanery contact number**

01636 650063

**Parish Council:**

**Clerk**

Catherine Millward

01636 813387

**Parish Councillors: Chairman**

Mr Simon Hill

01636 822777

**Vice Chair**

Mr Jem Hill

**Members**

Mr Mark Hennell, Mr Stuart Rose,  
Mr Dave Sheard, Mrs Anna Moorhouse  
Mrs Rebecca Creighton

**Laxton Village Hall: Chairman**

Mr Dave Sheard

07941 625761

**Thoresby Estate Office**

01623 822301

**Magazine Editor**

Mrs Jean Hennell

01777 870276

**Magazine Advertising**

Mrs Joy Allison

01777 871506

Email: [advertising@openfield.org.uk](mailto:advertising@openfield.org.uk)

**Photography by / Photos from**

Janet Cooke, Dave Sheard, Diane  
Hunt, Amelia (YFC), Lynn Brian, Dik &  
Joy Allison

**Open Field**

[www.openfield.org.uk](http://www.openfield.org.uk)

**We always welcome contributions and can help if you are not sure how to write what you want to say.**

**We believe all illustrations to be free to use. If anyone feels their image has been wrongly used, please get in touch.**

Contributions for the next edition to be with the Editor by **NOON ON 16th AUGUST PLEASE. Earlier preferred.** You can send in your contributions at any time.



## A Message from our Churchwarden

Thank you thank you Dave S for mowing the churchyard for us. It is now looking good again after getting off to a bad start, what with the weather and the big problem with the mower. Things always break down when you want to use them, but this was not once but three times. Thanks to Alan and George for sorting it out. Thanks also to Richard W for helping by doing all the strimming. It is much appreciated.

I must also say a big thank you to Sally P who has kindly volunteered to clean the church for us, which is a big help for Janet and myself. Thanks also to Sandra for cleaning the brasses and putting flowers on the altar.



## IMPORTANT ADVANCE NOTICE

Your September magazine will almost certainly be late because, now that it is printed in a school, it cannot be printed before the new school term starts.

We have included events for September in this edition and will bring you the September edition as soon as we possibly can.

## Congratulations

# 90

Congratulations to Margaret Noble, who celebrated her 90th birthday on 10th July. She is seen here with her daughter Elaine.

Many happy returns from the Open Field team.



## Thank you from Margaret

I would like to say a big thank you to everyone for their kind messages and gifts for my 90th birthday. Also to everyone that called in to see me.

I did not expect to reach the age of 90 but it was nice that so many of you remembered me on my birthday.

*Margaret Noble.*



## Congratulations

Congratulations to Emily Hennell who graduated with a Level 3 National Extended Diploma in Agriculture from Nottingham Trent University.

She is following in the footsteps of her family in Laxton and all the family are very proud of her.

Love from all the family xxx

*Emily seen left with Prof. Edward Peck, Vice Chancellor at her graduation.*

# **Lammas Service**

**When the first sheaf of corn is blessed**

**Sunday, 4th August 2024**

**10:30 am,**

**Laxton Church**

**The service will be taken by Rev Alistair Littlewood.**

Come along and join us for one of our traditional services. Bacon cobs will be served after the service. Please let me know if you would like to come so we have numbers for catering.

**Brenda 870541**

## **Laxton Harvest Competition Time**

Please bring your entries to church between 2 pm and 4 pm on Saturday September 14th.

Anyone can enter. You don't have to live in Laxton and you don't need to have entered before. Just have a go. You might surprise yourself.

Full details of the classes appear overleaf.

Someone who is thinking of entering this year has sent us a photo of entries in the making. Is there something promising on your trees or in your craft box?

There are also classes for photographs, and through the year we have seen some lovely shots in Open Field. There is no set size, so you can enter any prints you like. Just remember for the cover of Open Field it needs to be landscape format.





# **Laxton Harvest Supper**

**Friday 13<sup>th</sup> September**

**8 pm**

**in the Village Hall  
following the church service**

**Tickets £8**

***Pie, potatoes, peas, carrots, gravy  
Home-made sweets, tea and coffee***

**Everyone welcome. You don't have to be a regular  
at church. It is a good chance to meet up for a chat  
over a tasty meal.**

**Tickets from Brenda 870541 / Jean 870276 by  
Monday 9th September please**

## **Family Service**

**Sunday 15<sup>th</sup> September**

**3 pm in Laxton Church**

**After the service, refreshments will be  
served along with the presentation of prizes  
from the competition.**

**The auction of competition produce entries  
and donated goods follows after the  
service.**

**Everyone is welcome**





**St Michael the Archangel, Laxton**  
**Harvest Produce Show and Competition**  
**September 14<sup>th</sup> 2024**  
**Classes**



**Class 1**

- A 3 potatoes
- B 3 onions
- C 3 beetroot
- D 3 leeks
- E 3 carrots
- F 1 marrow
- G 1 pumpkin
- H 3 tomatoes
- I 3 runner beans
- J Any other produce

**Class 2**

- A 3 eating apples
- B 3 cooking apples
- C 3 pears

**Class 3**

- A Jar of chutney
- E Jar of jam
- F Jar of jelly
- H Jar of lemon curd

**Class 4**

- A Victoria sandwich cake (no cream)

- B Decorated sandwich cake (any flavour)
- C Fruit cake
- D Plate fruit pie
- E 4 small cakes (buns)
- F 4 small sweet pastries
- G 4 fruit scones
- H 4 cheese scones
- I 4 tray bakes

**Class 5 - Photograph**

- A A Country Scene
- B It's Spring Time
- C A wild creature
- E Picture suitable for the cover of 'Open Field'

**Class 6**

**Flower Arrangement**

- A Hydrangea head in a vase
- B Single stem rose in a vase
- C Bowl of floating flowers
- D One bloom, one veg
- E Autumn Arrangement

**CRAFT**

**Class 7**

Craft item, any medium, made in the last year

**CHILDREN'S COMPETITIONS:**

**Class 8 (up to 6 years)**

- A A Painted Flower Pot
- B Vegetable or fruit sculpture
- C Harvest Collage
- D A Jar of Flowers

**Class 9 (7 to 11 years)**

- A A Painting of Harvest
- B Vegetable or fruit sculpture
- C Model from Lego or similar
- D Hand made greetings card

We welcome additional donations of produce, preserves or home baking for auction, which is held in church at 5.00pm after the service. These can be left in church on the **Saturday, or Sunday of Harvest Weekend from 3:30pm** when the winning entries may also be viewed. **We will also be collecting non-perishable gifts for a local Food Bank.**

**This event will support general Church funds and a local Food Bank**

# Laxton Church Fête 12th July 2024

Is there something about Laxton holding the annual garden fête in July? Although we were not treated to the torrential rain of 2023, the setting up and the evening itself were cold and showery. Anyone looking at the photos could be excused for thinking the event had taken place in November.



Following on soon after the Open Gardens, Jean and Roy had their garden looking good and in addition to their family, several villagers came along to help get everything ready. They stuck to the tried and tested formula of cake stall, tombola, raffle and book stall supported by skittles (won by Edwin

Swordy), 'pluck a duck' and refreshments.

The tombola table was groaning under the weight of prizes and next to it, the cake stall was as full as ever with delicious-looking home bakes. Since the last fête, there have been a couple of crates of books for sale on an honesty basis at the back of the church. They were moved up to the sale table where Sandra was in charge.

Janet, helped by Brenda Chambers, had no difficulty selling tickets for the 32 prize raffle. Jean





has learned over the years that it pays to number the prizes to reduce the choosing time during the draw, and with so much choice, the plan proved a good one. The ladies were kept so busy selling the tickets that at the end of the evening, there were still a good half of them needing names written on the back. The system proved its worth as a good number needed to be taken to people who had left.

It was rewarding after all the effort to see so many people coming from the village and beyond to support us. There were our friends from Moorhouse, Egmont and Wellow, new friends from Kirton who had only recently heard about the event and some relatives from further afield. Names from all of the above were called in the raffle draw.

Jean and Roy would like to say a big thank you to everyone for all the raffle and tombola prizes,



which continued to arrive right up to the last minute; to the friends who helped to erect gazebos and tents in the rain; to Mel for the loan of her marquee, which was again very welcome for housing the Tombola, cake stall etc., and also for fetching the tables and chairs from the church. Thanks also to all the helpers who came on the day and everyone who came and helped to make the event a success despite the weather. At the end of the evening we had made £627 for the church.



# LEE DOYLE

## Building Contractor

New Houses, Extensions,  
Groundworks, Roofing,  
Damp-proofing & Dry Lining,  
Paving & Patios, Minor Repairs.

10 Elm Tree Rise  
Kneesall  
Newark  
Notts



# Stuart Rose

DESIGNER AND MAKER OF  
ORNAMENTAL IRONWORK

SECURITY GRILLES, RAILINGS, SCROLLWORK & GATES FOR HOME  
& BUSINESS

GENERAL BLACKSMITHING

IRONWORK REPAIRS & WELDING



## Britnell Tree Services



### All Aspects of Tree Works

includes felling, crown reductions  
crown thinning, crown lifting, pollarding

### Gardening & Landscaping

Reliable & Trustworthy Fully Insured &  
Qualified

All works carried out to BS3998

**Call Will today for your free quote on**

**07821 342942 or 01636 702807 or  
email**

**BritnellTreeServices@gmail.com**

# Beeby Plumbing

All plumbing enquiries please call:

**Guy Beeby**

**07792 484876**

**01636 822103**

Oftec qualified.

Fully insured.

• Domestic Plumbing •

• Taps to Toilets Installation & Repair •

• Central Heating Installation & Repair •

• Oil Boiler Installation & Service •

No Gas Work

***guy.beeby@btinternet.com***

MUSIC  
THEORY  
AND  
PIANO  
ROYAL  
SCHOOLS



Quality Paintings

or Drawings

**GRAHAM  
LAUGHTON  
B.A.**

PICTURE  
FRAMING  
SERVICE &  
RESTORATION



**01777 472885 or**

**07999 528397**

**grahamlaughton50@gmail.com**



## **AUGUST CONGRATULATIONS**

*Congratulations to everyone celebrating this month. The birthday roll of honour is: Michael M(94), Terry Smith, Ian Creighton, Rachel Hennell, Mark W, Sue S, Dave St and Ian R, Cynthia B, Ralph C (2) and Jimmy B (2)*

### *Anniversaries this month:*

*We wish a happy anniversary to Jean & Roy Hennell, Jean & Keith, Morton, Robert & Jan, Heather & Derek Storton, Joy & Dick Allison, Pat & Jeff Naylor, Jean & Wilf*

*Very best wishes to everyone mentioned. To anyone we may have missed, we wish you all a wonderful day and a happy and healthy year to come.*

*If you would like a mention for your special day, however long you have been associated with Laxton or Moorhouse, we would be happy to do so.*

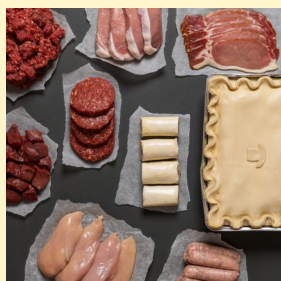


# **THE COUNTRY VICTUALLER BUTCHERS & BAKERS**

Award winning handmade pork pies,  
oven ready pies, cured bacon, free range pork  
and Longhorn Thoresby beef

Heritage recipes and a warm welcome await  
you at our Tuxford Pod.

- Order & Collect
- Free kerb side parking
- Daily hot food to go specials
- Loyalty card rewards
- Senior Citizens' 10% off Wednesday



Opening Hours:  
Tue - Fri 8am - 4pm, Sat 8am - 4pm  
Closed Sunday & Monday

**01777 874700**

Subscribe to our newsletter to receive online offers!

<https://thecountryvictualler.co.uk/newletter-subscription>

Nationwide delivery.

[thecountryvictualler.co.uk](https://thecountryvictualler.co.uk)

**ASHVALE ROAD, TUXFORD, NG22 0NH**

# Harvest Festival Service

**Laxton Church**

**Friday 13<sup>th</sup> September**

**7 pm**

**Everyone welcome**

## September Congratulations

We send early congratulations to anyone with a birthday or anniversary at the start of September just in case ...

## Get Well Soon

We have no names this month, which is good news, but we would very much like to send best wishes to anyone who is facing illness or surgery at this time and wish them a full and speedy recovery.

## Coffee Morning Corner

Two of the coffee mornings locally are taking a break for August. They will be back and waiting to welcome you in September

1st Saturday 15 Kirton Park for Sir John Eastwood Hospice  
10.30am 7th September

2nd Saturdays Egmonton Village Hall 10 - 12 14<sup>th</sup> September

3rd Saturdays Laxton Village Hall, 10.30 - 12.30  
20th September in aid of Dementia Charities

4th Saturdays Ossington Hut, 11 - 1 24th August

5th Saturday Glebe Farmhouse, Kirton 10.30am 31st August  
(next to the bus stop)

This event is in aid of Breast Cancer as well as Kirton Church

# Laxton History Group



We were pleased to welcome not only our Honorary President, Professor John Beckett, but also a good number of visitors and newer villagers.

We kept the business to a minimum, but confirmed the arrangements for the trip to Doddington Hall at the end of July. Members will have a guided tour of the Hall and an opportunity to see the biennial sculpture exhibition. Twenty one people have signed up to attend.

Helen and Dave Sheard are planning to host the community social event in August, to which all villagers and friends of Laxton are invited. More details appear elsewhere in this edition. They are also trying to find an afternoon when they will be able to repeat the very successful afternoon tea in their garden for our members and friends. Members should look out for an invitation.

We had asked Prof Beckett to give a presentation suitable for newer villagers to give them a chance to learn more about their new home. Most of those who came have recently returned to live in the village, but had not previously had the chance to hear John speak.



John opened by showing the certificate affirming his appointment as Hon. President of Laxton History Group, and his badge of office in the form of a mini stake made from one of the field marker stakes which had stood for a year in the Open Fields.

John stated that there is documentary evidence for the system in Mill field in 1232. He described the historic configuration of the four fields, as they were then, and how they were worked as three fields with West and East Fields being treated as one. He stressed that the field / crop rotation goes way back and still continues today, although in three fields much reduced in both acreage and number of strips.

We are currently in Year 2 of the rotation, with Mill Field in fallow. In the past 'fallow' has been bare fallow or a grazing crop undersown with the previous year's cereal. At present there is environmental fallow. The previous crop's stubble is left to provide food and shelter for ground nesting birds before being ploughed up from 15<sup>th</sup> July.



John illustrated how, throughout the period for which records exist, the acreage of the open fields has got smaller. Before the strips were reorganised from 1903 onward, four farms and the land which was to belong to them were fenced off from the open fields. This was carried out in late 1720s / early 1730s by the agents of the Court of Chancery who were acting for the Lord Kingston of the day, who was a minor.

Much effort went into preparing Laxton for enclosure in the 19<sup>th</sup> century, but it never happened, in part because of the agricultural depression at the end of the century.

The Jury, or Homage, still meets annually to inspect the wheat field and to recommend fines to the Court for infringements of the rules. These recommendations are taken to the Court in the form of a 'Presentment Paper'. The earliest example goes back to 1651. The Court Leet meets a week later to discuss the recommendations and to levy fines. The court is protected by law, being one of two manorial courts mentioned in the Administration of Justice Act (1977). The open field system is protected by a Parliamentary undertaking given by the Lord of the Manor.

John spoke about the importance of the Mark Pierce map of the estate in 1635. It is thought it was used at the Thoresby Estate Office over the years. It seems that Charles Stuart Orwin and his wife, Christabel, used it to research the material published in 'The Open Fields' published in 1937. They had discovered Rev. Collinson's research material including his note, dated 1906, that the Laxton system was now unique and suggesting it should be protected. When Laxton's unique status became well known, parties began to visit to study the system from the 1930s onward.

John had researched the passing of the 1635 map to the keeping of the Bodleian Library in Oxford. This was originally proposed as a loan in 1941, but resulted in a sale for £300.

There followed a Q&A session during which it was suggested that the unique status of the estate and its farming system merited World Heritage status.

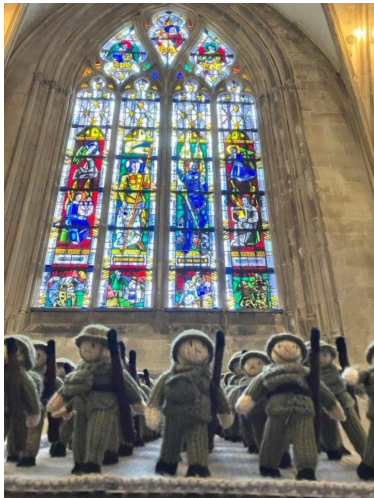
There will be no meeting in the Hall in August, but instead, on **Wednesday 21st**, we will be enjoying a garden party at Orchard View, courtesy of Dave and Helen Sheard.

On **18th September**, we will be pleased to welcome back **John Whitfield**, who is a popular and very knowledgeable speaker. This time he will be telling us about '**Women Pilots of World War II**'. The meeting will **start at 7.30pm** as usual and we will be delighted to see any of our visitors coming back, or indeed anyone else who would care to come along.

# The Longest Yarn at the Minster

The D-Day 80th anniversary, commemorated as The Longest Yarn, comes to Southwell in UK-first. The Longest Yarn is an 80m long 3D depiction of that fateful day, 6th June 1944, in wool art.

With 80 displays, each measuring one metre in length, depicting scenes of the world's largest amphibious invasion, The Longest Yarn is something quite unique and not to be missed. The scenes include the build-up to D-Day in England, the horrors on the Landing Beaches and the bloody inland battles.



The installation was first on display in Carentan, France, in May, before heading to Southwell Minster from 9th - 27th September. Admission is free (donations welcome) and tickets are not needed.

Created with guidance from professional historians to be accurate, each scene has been selected by the creator to depict the story of this momentous day in history.

Some of the scenes depict actual WW2 veterans that were in the theatre of war in Normandy on 6th June plus the lesser-known events in local towns and villages in Normandy.

Over 1,000 knitters from across the world, including the UK, USA, Australia, New Zealand, Canada, France and even people with NATO stationed in Europe, have joined in to help make this project happen.

Tansy Foster, who came up with the idea and has lead the operations from France said:

"Two of my favourite scenes are the depiction of the famous moment Lord Lovat and Piper Bill





Millin crossed Pegasus Bridge, and when he plays his pipes on Sword Beach. Piper Millin's son donated his father's favourite jumper to us which we unravelled (frogged) and used the wool to knit the figures of Piper Bill - it's given a real poignancy to these scenes." Readers might like to know that Piper Millin's son, John, will be coming to speak to Laxton History Group about his father in February 2025.

The Very Revd Nicola Sullivan, Dean of Southwell commented:

"We are honoured to be the first place in the UK to host this prestigious exhibition."

The exhibition is free of charge and is expected to run from 9<sup>th</sup>-27<sup>th</sup> September 2024. Please see the September edition for confirmed dates. An accompanying book will be on sale, giving more information on each of the 80 scenes, including a picture from 1944 to show viewers what each scene was based on.

The Longest Yarn are a non-profit Association and self-fund the exhibition. Donations will be welcome.



## Parish Council Minutes

We apologise that the Minutes of the Parish Council have not appeared in Open Field since early in the year. There has been a delay in getting them to us. The March Minutes appear at the back of this edition and we have the April Minutes ready to include in the September edition. We hope that we will now receive them more regularly. We always include them as soon as they are received.

# Michael Dicksbury Memorial Vintage Tractor Road Run 7th July 2004

This annual event in memory of Michael Dicksbury of Tuxford, and which supports Weston Park Hospital's cancer ward at Sheffield, took place on Sunday 7th July. A good gathering, reported to be about 80 vehicles, set off from Tuxford at 10am heading north with a lunch stop, which was just outside Church Warsop.



The afternoon route took them through Perlethorpe and Walesby to Kirton and up Cocking Hill into Laxton. By this time the organisers had realised that their original intention to include a tour of South Field was rather optimistic. To get home to Tuxford at about 4pm as planned, they drove straight along High Street and across The Bar before going down into Egmont and up to Tuxford.

There was a great variety of vehicles on show from old tractors of the sort we see around the village quite often to a group of very large modern ones which managed a cheerful tune on the hooter as they passed spectators. Many makes of tractor were represented, some in working condition and others polished and preserved for show.

For some it was a solo run, but for many it was a





chance to take a passenger or to tow a trailer with the whole family in varying degrees of comfort. Upholstered sofas were spotted!

Given the inclement weather we had at the start of July, they were fortunate that after having sharp rain showers and hail in Clumber Park it cleared up and they completed the run under blue skies with picturesque white clouds before the next shower hit.

Laxton and Egmonton were well represented in the convoy.




## Friendly & caring residential homes for your loved ones

At Ashall Care, we have genuine affection for our residents. It matters to us and it matters to our residents. Our dedicated and long-serving team of friendly carers are tirelessly committed to the wellbeing and happiness of residents' lives.

24-hour residential care, offering permanent and respite accommodations

**Contact us to book a visit to see what we can offer**

  
**Barnby Court**  
CARE HOME

**Barnby Court Care Home**  
Great North Road, Barnby Moor  
Retford DN22 8QS  
01777 705902

  
**Farthings**  
RESIDENTIAL CARE HOME

**Farthings Residential Care Home**  
Old London Road, West Drayton  
Retford DN22 8ED  
01777 838219

Email: [info@ashallcare.co.uk](mailto:info@ashallcare.co.uk) Website: [ashallcare.co.uk](http://ashallcare.co.uk)

 **Ashall**  
CARE

# **HILLCREST: Equestrian Services**

- |  |  |
|--|--|
| <input checked="" type="checkbox"/> Full livery    | <input checked="" type="checkbox"/> Riding lessons       |
| <input checked="" type="checkbox"/> Breaking       | <input checked="" type="checkbox"/> Secure               |
| <input checked="" type="checkbox"/> School livery  | <input checked="" type="checkbox"/> CCTV                 |
| <input checked="" type="checkbox"/> Rehab stabling | <input checked="" type="checkbox"/> BHS Regd.            |
| <input checked="" type="checkbox"/> Holiday livery | <input checked="" type="checkbox"/> Qualified instructor |
| <input checked="" type="checkbox"/> Selling livery | <input checked="" type="checkbox"/> Fully insured        |



Please phone or see web site  
for further information

**Tel: 07359 141 051**

[www.hillcrests.co.uk](http://www.hillcrests.co.uk)

email: [hillcrests@outlook.com](mailto:hillcrests@outlook.com)

# **HILLCREST: Gardening Centre**

- |   |   |
|---|---|
|  Fertiliser       |  Bedding plants    |
|  Compost        |  Hanging baskets |
|  Seeds & bulbs  |  Giftware        |
|  Shrubs & trees |  Fruit & Veg     |

**Everything for your garden:**

**Open from 9am, closed Tues & Weds**

(for more details see web site)

**Tel: 07576 140 107**

[www.hillcrests.co.uk](http://www.hillcrests.co.uk)

**Now  
Open**

## Sculptures at Doddington



**The popular biennial Sculpture Exhibition returns to Doddington Hall between July 20th and September 8th 2024.**

The gardens host over 300 works of art made by 60 Sculptors from across the UK and beyond. These have been selected from national and international sculptors to suit all tastes, styles and budgets. A large indoor gallery in the Stable Yard will exhibit smaller-scale pieces. Almost all pieces are for sale.

The Gardens and Gallery are open daily with no extra charge for the exhibition. Gardeners' World '2 for 1' tickets are accepted and some

other membership cards attract a discount so take them with you and ask. (NB Not National Trust or English Heritage). Carers get 2 for 1.

**Admission:** £9.50 adult, £4.50 child, Family £22.

**Open:** 10am - 4pm.

## Peace Doves at Lincoln Cathedral



Peace Doves is a mass-participation artwork created by sculptor, Peter Walker. The beautiful installation is made up of thousands of paper doves which will be suspended above the Cathedral's Nave and is accompanied by music composed by David Harper.

The artwork will be on display **from 5<sup>th</sup> September to 14<sup>th</sup> November 2024**. But first your help is needed to write messages on the doves.

The doves have been available to make in the Cathedral from 1st May and visitors, schools and local communities groups are being invited to add messages of peace, hope and love to the paper birds.

Over the spring and summer it is hoped that more than 10,000 doves will be created which will then be turned into a stunning artwork which will hang from the ceiling of the nave and be available to view from the beginning of September.

Photographed above October 2022 in Sheffield Cathedral.

# News from the Museums of Tuxford



We are always intrigued by the stories people share with us. The Walks of Life Museum is delighted that a recent visitor John B. Tannen, (left with Robert Carlisle) stunt man and radio presenter, has arranged to come along and tell us about his memories and his interesting life. This will take place on Saturday 24<sup>th</sup> August at 2 pm. Do come along - free entry with refreshments.

There are many social stories behind the objects and their connection to services and trades today. Both museums are exploring this year's themes for Heritage Open Days, which are 'routes networks and connections' and will be holding special events.

At the Walks of Life Saturday 7<sup>th</sup> September from 10am, we will be offering free stalls in honour of International Charity Day and the work charities do. If you would like a stall to promote your cause and raise some funds please contact Diane

by the end of August on:

**dianehunt08@btinternet.com.**

Tel **01777 872776**. Please leave a message

The Museum of the Horse will have an exhibition entitled "Roads, Coaches and Tuxford, which will look at the development of the roads, travel and the coaching system with a study of Tuxford, which was one of the earliest stops on the Great North Road.

The exhibition will run from 9<sup>th</sup> - 15<sup>th</sup> September, culminating in an illustrated talk by Sally Mitchell, Curator of the museum, on Saturday 15<sup>th</sup> September at 2





pm. By visiting the exhibition and the talk, people will learn about pack horses and the pack horse bridges; how roads were established and how the worthies of Retford went to Parliament and had the Great North Road diverted!

Discover how the coaching system developed. Find out what happened if you were run over by a mail coach. See a real mail coach, which is part of the Museum's collection, situated in the courtyard. Find out about the difference between a posting house and a post box. See many of the day to day items that were used in the world of our ancestors. It is not as romantic as the films lead you to believe.

You can also find out about how many of the sayings of today originated in the coaching days. Entry to the museums and talks are free. Donations are very much appreciated as the museums have no outside funding.

The Museum of the Horse is open 9.30 am to 4 pm Monday to Friday 9.30 to 1.30 Saturday. Last visit an hour before closing. Group visits by arrangement. Tel **01777 838234**

Email: [curator@museumofthehorse.co.uk](mailto:curator@museumofthehorse.co.uk)

Walks of Life Museum: Thursday and Saturday 11am to 4 pm **01777 872776** other times by arrangement. Please leave a message.

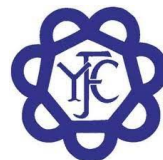
Email [diane hunt08@btinternet.com](mailto:diane hunt08@btinternet.com)



Heritage open days 6<sup>th</sup> to 15<sup>th</sup> September, open every day 11am to 4pm

Our traditional building skills activities with the conservation officer are ongoing. We now have the paint removed from the front of the house. Coming soon: Lime plastering. Please contact us if you are interested

# Tuxford Young Farmers



Welcome to another month with Tuxford Young Farmers. On 22<sup>nd</sup> June some of our senior and junior members competed in a rally with a range of events such as egg catching and who could put 10 t-shirts on the fastest. Congratulations to all the juniors who went for getting the most overall points throughout the whole day. It was a great day and thank you to all our members who came and competed.

We had an amazing tour around a John

Deere dealer where we were shown different tractors, combines and other machinery. They then showed us around their spare part warehouse and ended the evening with a PowerPoint presentation about all the different warehouses across Europe. Before we left, they gave us all a cap.

The following week we went to see the Tasker Partnership, a business farming soft fruit. They showed us around the strawberry and raspberry farm and let us sample some of their fruit. Everyone enjoyed the visit and all the raspberries and strawberries.

On Wednesday 10th July we visited AgriCycle in Melton Mowbray. It was so interesting to see how agricultural and household waste is processed and sorted ready to be recycled and made into other products. There was everything from chemical containers, cardboard, carpet, baler twine, coffee pods, contact lenses, shot gun cartridges and safety goggles!

We saw the special machines that sort the products into different materials as well as squashing them into bales so maximum weights can be towed on the lorries.

Thanks to AgriCycle for the interesting tour and refreshments.

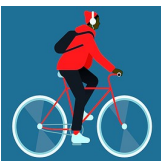


# Sports Field Bonus Ball Weekly Draw

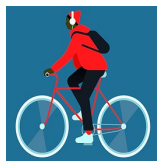
15/6/24	22	John/CarolS
22/6/24	34	ROLLOVER
29/6/24	6	Janet Cooke
6/7/24	13	Linda Malloy

Since last month, Bonus Ball number 2 has been kindly been taken by Dave and Helen Sheard so we now have 7 of the 59 numbers available for anyone who would like an additional one or who would like to become a new member.

The available numbers are: **29, 34, 37, 44. 51, 52, 53** As a reminder, all proceeds go to supporting the Laxton Sport and Recreation Field facilities.



## Ride and Stride (for churches)



**Saturday, September 14th, 2024**

**Sponsored bike ride.**

**How many churches can you visit From 10 am to 6 pm?  
in aid of  
Nottinghamshire Historic Churches Trust.**

## Sherwood Forest Rotary

**Supporting the Local  
Community**

**07711 802683**

**Meeting every 2nd  
Wednesday at  
Ollerton House Hotel**

**Visitors always welcome  
[www.rotary.org/1220](http://www.rotary.org/1220)**

## Wellow Heritage Talks

**in The Old Schoolroom**

**7th September: Talk: 'The  
Dukeries' by Denis Hill. 12.00  
noon**

**7th September. Wellow  
Village Heritage Walk. From  
the Schoolroom 1.30pm**

**To register for these events  
email  
[denishill1066@gmail.com](mailto:denishill1066@gmail.com)**

AUGUST / SEPTEMBER SERVICES IN OUR VILLAGE CHURCHES			
<b>HC</b> = Holy Communion <b>EP</b> = Evening Prayer <b>MP</b> = Morning Prayer, <b>Es</b> = Evensong <b>WfA</b> = Worship for All <b>WS</b> = Word			
<b>4th August</b>			
10.30am	Laxton	Lammas / HC	Rev Alistair
4.00pm	Wellow	EP	Heather B
<b>11th August</b>			
10:30am	Kirton	HC	Rev Vaughn Sweet
<b>18th August</b>			
10.00am	Walesby	HC	Rev Vaughn Sweet
10:30am	Wellow	HC	Rev Chris Levy
<b>25th August</b>		No services	
<b>1st September</b>			
10:30am	Laxton	HC	Rev Margaret
4.00pm	Wellow	EP	Heather B
<b>8th September</b>			
10:30am	Kirton	HC	Rev Alistair
<b>13th September (Friday)</b>			
7.00pm	Laxton Harvest		
<b>15th September (Sunday)</b>			
3.00pm	Laxton Harvest Family Service		

**WS** = Word

**10.30am Laxton Lammas / HC Rev Alistair**

4.00pm      Wellow      **EP**      Heather B

10:30am Kirton **HC** Rev Vaughn Sweet

10.00am Walesby **HC** Rev Vaughn Sweet

10:30am    Wellow            **HC**                    Rev Chris Levy

No services

**10:30am    Laxton                    HC                    Rev Margaret**


4.00pm      Wellow      **EP**      Heather B

10:30am Kirton **HC** Rev Alistair

**7.00pm** **Laxton Harvest**

**3.00pm** **Laxton Harvest Family Service**

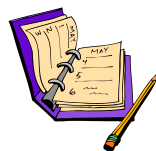




# *DATES FOR YOUR DIARY*

## **August**

Sat 10 <sup>th</sup>	Laxton Social Event at Orchard View
Weds 14 <sup>th</sup>	WI Outing
Weds 21 <sup>st</sup>	<i>History Group Afternoon Tea at Orchard View</i>



## **Forward Planning:**

### **September**

Weds 11 <sup>th</sup>	WI
Fri 13 <sup>th</sup>	<i>Harvest Supper in the Village Hall</i>
Sat 14 <sup>th</sup>	<i>Laxton Harvest Competition</i>
Sun 15 <sup>th</sup>	<i>Harvest Auction following the service</i>
Weds 18 <sup>th</sup>	<i>History Group</i>
Tues 24 <sup>th</sup>	<i>Parish Council</i>
Sat 21 <sup>st</sup>	<i>Coffee Morning</i>
Sat 28 <sup>th</sup>	Southwell Ploughing Match & Show, Oxton

## **Regular Events:**

Parish Council	<i>4th Tuesday of January, March, May, July, September and November</i>
Quiz Nights	<i>1st Friday of December &amp; March tbc</i>

**Copy Date for SEPTEMBER 2024 edition:  
12 noon, 16th AUGUST 2024**

*Please let us have your contributions in good time. We do what we can to include last minute items, but it is not always possible. Late arrivals are unlikely to make it into print.*



# G.D. HALL LTD

(Independent Funeral Directors)

Newark Road  
TUXFORD, Newark  
Nottinghamshire  
NG22 0NA

13 Bridgegate  
Retford  
Nottinghamshire  
DN22 6AE

Tel. 01777 872929

Tel: 01777 701222

Email: [info@gdhallfunerals.co.uk](mailto:info@gdhallfunerals.co.uk) Web: [www.gdhallfunerals.co.uk](http://www.gdhallfunerals.co.uk)

Private chapel of rest  
24 hour service

Golden Charter pre-payment plans available  
SAIF Approved

Personal Visits to your home  
**Mobile 0797 257 6020**

## New Hill Fruit & Veg



Fresh seasonal fruit and vegetables  
delivered to your door

Call or Message: 07928 503467  
Email: [newhillfruitandveg@yahoo.com](mailto:newhillfruitandveg@yahoo.com)

With free delivery to Laxton and surrounding villages every Monday and Thursday, why not call now to book your fresh fruit, vegetable and bread delivery slot or Find us on Facebook to see our list of produce and any daily offers. Alternatively you can visit us at Clovelly, New Hill, Walesby, NG22 9PB Or Call 07928 503467

### HERE'S A SMALL SELECTION OF OUR PRODUCE:

- |                     |                |        |                                  |
|---------------------|----------------|--------|----------------------------------|
| .Potatoes           | .Lettuce       | .Eggs  | .Pre set Fruit & Vegetable Boxes |
| .Carrots            | .Tomatoes      | .Bread | £12 Essentials Box               |
| .Cabbage            | .Cucumber      | .Cakes | £16 Family Box                   |
| .Broccoli           | .Peppers       |        |                                  |
| .Red & White Onions | .Spring Onions |        |                                  |
| .Mushrooms          | .Soft Fruits   |        |                                  |
| .Courgettes         | .Apples        |        |                                  |
| .Sweet Potatoes     | .Satsumas      |        |                                  |
| .Baby leaf Spinach  | .Pears         |        |                                  |
| .Mange Tout         | .Bananas       |        |                                  |
| .Celery             | .Grapes        |        |                                  |
| .Garlic Bulbs.      | .Local Honey   |        |                                  |

We are now proud to be working along side Atherleys Bakery of Farnsfield, offering a range of fresh baked bread and cakes by pre order only.

ORDER BY PHONE, TEXT,  
FACEBOOK MESSENGER OR EMAIL

**Deliveries now subject to a £1 charge.**

Our meeting was held on Wednesday 10th July in the Village Hall. The President welcomed everyone.

We were pleased to be joined by two visitors, Daphne and Julie.

Two of our member members had been on a felting course at County House and five members enjoyed an evening at Southwell playing croquet.

A letter had been received from Megan, our last speaker thanking us for our donation to 'The Dogs' Trust'.

An invitation has been received from County to attend the County Lunch, Summer Lunch, Bingo at Lowdham, a Rummikub competition and a curling competition. Teams 4Us have sent an invitation for us to knit hats, gloves and mitts for children abroad, which will be collected during October and delivered in time for Christmas.

Details were discussed for our Fashion Show on October 3<sup>rd</sup>.

Our speakers for the evening were Dik and Joy Allison, who we booked after a chance conversation with Margaret Palmer about their upcoming holidays. Margaret was intrigued by the idea that they were going to stay in a 'cave hotel'. She thought members would be interested to discover more.



They had flown to the regional capital, Bari, to start a tour of the Puglia region of southern Italy. They transferred to their first accommodation - the cave - situated at Matera, just across the border in Basilicata.

This is one of two World Heritage Sites they visited. Old Matera consists of a 380m high rock hollowed out by cave dwellers.

Unbelievably these dark and damp dwellings were still inhabited by people and

their animals in the 1950s, to the detriment of their health.

At this point the government became aware of the appalling standards of the housing and they moved everyone out into houses and apartments designed to accommodate them on the plain above. This occurred between 1952 and 1968, and proved a social disaster as it destroyed a the strong sense of community.

Some young people who had grown up on the plain believed the caves could be transformed and they started the process by which

Matera went from ‘the shame of Italy’ to a World Heritage Site (1993) and a European Capital of Culture (2019). Joy and Dik were amazed by their own private cave, which was positively luxurious.

Their tour was billed as a culinary tour of Puglia and included a visit to a bakery producing the local bread, which has a DOP designation similar to Stilton cheese. They watched the bread being shaped by hand and baked in an vast pizza-style oak wood fired oven. During Covid, this bakery had provided free bread to the sick and out of work.



The tour also included visits to see the production of both wine and olive oil and to try the produce. One of the highlights was a workshop where they learned to make three shapes of pasta using the southern recipe of just semolina and water. This was taken away and cooked for everyone to share later. Two other local recipes were taught, involving turning wet stale bread and tomatoes into a salad and then, without the tomatoes but with herbs and plenty of parmesan, into a type of vegetarian ‘meatballs’.



The second part of the trip took them to Alberobello, the second World Heritage site, where they stayed in one of the famous trulli houses. These structures all have conical limestone roofs and were originally built entirely

without mortar so that they could be rapidly dismantled to avoid a dwelling tax.

The tour finished in Bari, with a walking tour of the old town and a second chance to make orecchiette, the local shape of pasta, as well as to walk along the famous lane where older ladies sit outside making pasta all day and drying it in the sun before it is bagged up to sell.





# Laxton Church Garden Fête Thank You

A huge thank you to Roy and Jean Hennell and family for hosting our garden fête again this year. Thank you to everyone for their support on what was not a very good night from the weather point of view.

Everyone enjoyed the fun of the stalls and the excellent refreshments prepared fresh for us on the spot.

As everyone was packing away, a quick tally was made and we were delighted to discover that we had raised £627, which is just more than last year's £613.

Thanks again,

**Brenda**



## Group Oil Order

The daily price published by Boilerjuice for the average price of 1000 litres of oil in England had been following the normal summer downward trajectory with the occasional blip. Unfortunately in the second week of June the price shot up by 4p/litre to over 64p. At the time of writing it has started to come back down to just over 63p, and it is to be hoped this continues until we order.

Only a couple of enquiries were received from people who wanted to order early. The plan for the group order remains to pick a good time around end of July / August before the autumn price rise as heating goes on again. We hope that then we will not need another order before November.

Please will those who have not yet done so **send in their orders now** so that an order is not delayed waiting for you.

When it seems right to order I will only allow a short, possibly **very** short, time to respond so that I can act quickly to secure the best price at the time for everyone.

New members are welcome to join the ordering group at any time. All we ask is that you can be contacted by email, either directly or via someone else who can speak for you.

Please use my personal email if you have it. [oil@openfield.org.uk](mailto:oil@openfield.org.uk) is a general address you can use if you don't have mine, which I don't publish because of the amount of spam it generates.

*Joy*

## Nature Notes From Moorhouse

*Paul's 'Nature Notes' are taking a break this month. We hope to welcome them back next month.*

## Southwell Ploughing Match and Show

This is a highlight of the year for many people in our community. It will be taking place on September 28th in Oxtou (NG25 0TD) between 8am and 5pm and will be well signposted on the day.

The show represents all the really important aspects of agriculture from preparing the land to cooking and eating locally produced food. Exhibits and competitions include ploughing, using the original horse power as well as vintage and modern tractors, to livestock judging and farm management displays, a dog show, horticultural & home produce competitions and home crafts. It is a full day out for all the family.

Anyone can enter the competitions and entry forms are available now. Please see the web site for details of classes and how to enter.



The JCB Dancing Diggers will be showing their skills in the main ring, and there will be a

Scarecrow Gathering with classes for businesses and families or groups.

The site is large and there are free tractor and trailer rides all day to enable everyone to get right round to see everything whether because it is too far to walk or just for fun.

Tickets can be purchased from people in the villages, including Paula Doyle c/o Brenda Noble in Laxton, and Jill Hoyland in Egmontou or on the show's web site: [www.southwellploughingmatch.co.uk/tickets](http://www.southwellploughingmatch.co.uk/tickets) Tickets are £15 on the day and £13.50 in advance. Under 14s free. VIP tickets with forward parking cost £80 and admit one vehicle and 4 people.

# Festival of Bird Art, 2024, Bakewell



*White winged sandpiper 2023 winner*

Regular readers will know about the annual Festival of Bird Art held by the BDWCA (British Decoy and Wildfowl Carvers Association). It is both a display of an unusual craft where tremendous skill is obvious and the British Bird Carving Championship.

There are classes for youth, novice, intermediate and advanced carvers. Even the novices produce some amazing work. One reason why the entries are so impressive is that they have to be exactly the same dimensions as the real bird. The individual feathers have to be in the right places, numbers and colours and

to ensure they are, one of the judges is an ornithologist.

One class is for decoy waterfowl, which have to float in the river just like the real thing. To make sure they do, one hardy member of the organising committee goes for a paddle with them in the nearby river while the judges (and usually plenty of interested bystanders) observe.

In the advanced class the carvers have to make everything in their entry, including any rocks, plant material or water. The way they achieve this can be stunning and is well worth the trip to Bakewell.

Alongside the competitive entries are demonstrations of wildfowl carving and painting, walking stick making, and assorted decorative techniques.

For the practically minded, there are stockists of carving supplies, equipment, paint and wood for carving alongside displays of wildlife art.

The event takes place in the Agricultural Hall in the centre of Bakewell. This year it will be held on Saturday 14th (11am-5pm) and 15th (10am - 3.30pm) September. £2.50 admission, seniors £2, U16s free.

See [www.bdwca.org.uk](http://www.bdwca.org.uk)



*A sanderling, the 2023 runner up*

# Usedgardenmachinery.co.uk

Formerly of Beacon Court, Ollerton  
All pre season service work undertaken  
Free collection and delivery  
Ring Alan for all enquiries

**T: 01623 860343**

**M: 07594 198646**

## Mobility Scooter Repair Service

### Robert Paling Boiler Services

**07849747500**

**robpalingboilerservices@  
yahoo.com**

- Oil Boiler Servicing and Repairs
- Oil Boiler installation and commissioning
- Oil Tank Installation
- Emergency Call Outs
- Fully Insured
- Oftec Registered

### Corrine Parkes

Your local weight loss consultant

**121 Diet by Cambridge  
Weight Plan**

- Virtual or face to face consultations
- Special new client discounts
- Free first consultation

**Contact me today**

**07857 187237**

**corrine.parkes121diet@gmail.com**



## Tuxford Lawnmower Centre Ltd



*Specialist in all types of Garden Machinery*

**Sales, Service, Spares & Repairs**

**Tel 01522 779110**

**Come & Visit our Showroom Today!**

Ashcroft, Gainsborough Rd, Gorton, NG23 7HX

**www.tuxfordlawnmowercentre.co.uk**

**info@tuxfordlawnmowercentre.co.uk**



# Egmanton Craft & Produce Show

The 24th Egmanton Craft & Produce Show will take place in Egmanton Village Hall on Saturday 7th September. There are plenty of classes for fruit, soft fruit and vegetables as well as different crafts, jams and pickles, cookery and photography, so everyone should be able to find something they can enter. If you don't have many of anything, maybe you could make a harvest basket of produce or bring your tallest flower or longest weed ...

There are also a number of classes where young people can demonstrate culinary and crafting their creativity.

There is a charge of 50p per entry for adult classes while under 18s are free. Details of which classes you want to enter, with your payment should be sent to Elizabeth Banks at Trebrea, Tuxford Road with payment by Tuesday 3rd. Schedules are available from Joy or from Elizabeth at the same address. Entries will be staged during the morning of 7th September, and the event opens to the public to see the display and presentations at 3pm.

Everyone is welcome to enter or view.

## **ADVANCE NOTICE**

# **WI FASHION SHOW**

**THURSDAY 3RD OCTOBER**

**LAXTON VILLAGE HALL**

**TICKETS £6 INCLUDING REFRESHMENTS**

**7 PM REFRESHMENTS 7:30 PM FASHION SHOW**

**TICKETS FROM BRENDA 870541**

**MARGARET 07826 429987**

# Minutes of the AGM the Visitors Centre Trust held on Wednesday 26th June 2024

**PRESENT** Sir John Starkey, Joan Cottey, Roy Hennell, Robert Haigh; Graham Laughton; Michael Manning; Ivan Rayner

## **1. Welcome and Apologies**

Sir John welcomed all. Apologies had been received from John Beckett.

## **2. Minutes of the AGM held on 28th June 2023**

Approved as a true record and signed by the Chairman

## **3. Matters Arising. NONE**

## **4. Annual Financial Report**

Copies of the accounts for the year ending 31/5/24 were circulated, discussed, agreed and accepted.

The latest bank statement dated 20/6/24 shows a balance of £13,231.57. The larger deficit over the last 12 months is due to expenditure on the Booklet reprint and replacement doors to the Centre and both Toilets less contributions kindly made to both from the Thoresby Settlement. Secondly we have had a new Business contract for the Electricity and as we have been paying only a very small direct debit to E-ON for the last 2 years the arrears had to be cleared. Finally our income for sales/donations had dropped due to both the booklet and walk leaflets not being available to sell and the reduced footfall. The COVID grant and recovery grant awarded have assisted in covering these losses.

We are still receiving annually £900 from Newark and Sherwood DC towards "tourism" and this has not been increased since agreed in the Service Level Agreement on 31/8/2015. It was suggested that Michael write to them to ask if this could be increased due to inflation/Covid? reduced footfall/ greatly increased running costs etc.

## **5. Centre Report and Public Toilets**

Michael reported that the condition of the Centre and particularly the Toilets is of continuing concern. Repairs are required especially in the gents toilets which has made cleaning of them difficult. Additionally the Centre has been used for the storing of furniture etc. by the Dovecote Inn. This has been mentioned to them on several occasions but it is still happening. After a discussion it was agreed that Sir John should write directly to The Dovecote pointing out this should not be happening.

It was also agreed that Michael should speak with Sam and say that

unless the cleaning can be improved following the above within a month, the Trustees would have to look for alternative cleaning arrangements. I was suggested that if this happened Cath Manning would look to give the Centre and Toilets a deep clean and the Trustees would look at future arrangements.

The Centre had again not suffered any damage but there is still evidence of damp on and between the Centre and Gents Toilets as there is flaking paint and plaster in several places.

Gregor did inspect at last years meeting, agreed that it needed attention but that it would be some time before it can be done.

It was agreed at the last AGM we would not be continuing with the Heritage Mugs due to the cost of producing them as they would cost £5.60 per mug. This has subsequently turned out to have been a very good decision as we have only sold 12 mugs in the whole year!!

## **6. AOB**

As mentioned in the ordinary meeting, following the joint meeting with the Village Hall earlier this year, Terms of Reference had been produced by Gregor, revised and expanded by Sir John and returned by Gregor with Thoresby Estates being excluded. Sir John said that this was unacceptable and would be speaking with Gregor.

Sir John also mentioned that he had approached the Dean of Brackenhurst College's Dawn Scott about the possibility of defining the Sustainability of the Open Fields System as compared with land of a similar area on the Keuper marl being farmed according to current practice. During preliminary discussion it was suggested that funding might be found to conduct a survey with a PhD research student. Further discussions are to be held when the new Director of Research is in post.

Sir John asked the meeting whether the Trustees felt that the Visitor Centre still needed a Trustee Board and whether the objectives and management of a visitor offer should not now be undertaken directly by The Thoresby Settlement as owners of a national treasure. The initial reaction was yes the Board should continue as it was felt the Centre could be vulnerable/at risk without a Trustees Board to manage it?

Sir John regretted the absence of Gregor to discuss this matter.

Joan mentioned the possibility of the Open Field System being registered as a World Heritage Site because of its historical importance and being THE ONLY remaining example anywhere! Joan is to make some enquiries through JB and the History Group.

Again the subject is for further discussion.

Michael asked if the old Interpretation Boards (which have been saved until this meeting to decide what to do with them) could now be disposed of. They are in very poor condition due to water ingress, not just the boards but the frames as well. All agreed.

**Trustee Members.** Since Michael is no longer the Chairman of the Parish Council, the ex officio position should now be held by the new Chairman Simon Hill. This will mean that we will then have 12 Trustees, the official number is 11.

It was suggested that one of the co-optative members (we have 6) be kindly asked to relinquish the post. It was further suggested that as Sam from the Dovecote has not regularly attended meeting he should be asked. All agreed.

Date of next meeting is to be confirmed following contact with Gregor. There being no other business, Sir John closed the meeting thanking everyone for their attendance.

## Minutes of the Visitors Centre Trustees held on Wednesday 26th June 2024

**PRESENT** Sir John Starkey, Joan Cottee, Roy Hennell, Robert Haigh; Graham Laughton; Michael Manning; Ivan Rayner

### **Welcome and Apologies**

Sir John welcomed all. Apologies had been received from John Beckett.

1. **Minutes of the meeting held 28th June 2023**  
Approved as a true record and signed by the Chairman
2. **Matters arising**  
Interpretation Boards, Booklets and Walk leaflets

### **Interpretation Boards.**

As previously mentioned all the new boards are in place and the Church Panel has been moved against the hedge to give a better viewing position. Regarding the Castle Site panel, this needs some clearance of vegetation and will be done asap.

Joan C mentioned the draft of the new board for South Field.

John B had previously agreed to take this on but the walk leaflets



are not yet completed (see below)

Sir John suggested J B be contacted and work started on it. Joan and Graham to liaise on illustrations to accompany the text. Joan agreed.

### **Village Booklets**

Michael reported that the new Booklet had been printed and is now available in the Centre, and copies were distributed to all Trustees at the time

Linneys were extremely generous billing us for only 500 copies but sent us 4,000.

Gary our contact at Linneys was well thanked.

### **Walk Leaflets**

We are still waiting for agreement that the yellow and green walks can be printed. The work needed to the purple route has been undertaken by Thoresby and only now requires clearance of this years vegetation. Joan will speak with Stuart and J B so we can get all the leaflets to the printers asap. Michael has already contacted Gary to tell him they are on their way.

### **Tree Planting.**

The tree is growing very well and the site is regularly strimmed and the tree watered.

Thanks to Joanne Godson were given for this and it was suggested we send our thanks to her by letter.

## **4. Treasurers Report**

This item will be dealt with in the AGM meeting when the accounts will be formally presented to the Trustees

## **5. Thoresby Settlement update**

As Gregor has not attended the meeting no update is available from him however Sir John has received Terms of Reference from him. Sir John has revised and expanded them and Gregor's reply has excluded Thoresby Estates.

Sir John said this is not acceptable and intends to speak to Gregor about it.

## **6. AOB**

## **7. Date of next meeting**

The next meeting is to be confirmed following contact with Gregor.

# Milton Mausoleum

In June we organised two events with differing outcomes.

For a second year we worked successfully with the family at Lound Hall on a fundraising event, but this year we were not favoured by the weather, with occasional heavy rain showers during the day.



We are resilient and the afternoon was well attended with three talks conducted in the Hall, stallholders receiving a steady stream of visitors, a great interest in the beekeeper and his different types of honey, and also the croquet lawn was well populated. A team of players from the Gainsborough Croquet Club explained the rules and ways of playing the sport. They are a friendly group and welcome new members at any time.

The sport can be traced back to 14th century France and is also popular in the USA and Canada, although some say that it originated in Ireland. The event brought about a very successful day resulting in another generous amount of fundraising towards the upkeep of our historic Milton Mausoleum.

On Saturday 22nd at the Mausoleum we presented our Summer Music Concert featuring a ladies' a cappella choir, Harmonix. The building lends itself to this type of choral singing. The audience enjoyed wine and canapes on the lawn at the interval and the concert was concluded with a great raffle and the quarterly £100 Prize Draw.

Our next event is the popular **Christmas Gifts and Crafts Fayre** held in the Mausoleum from **10am – 3.30pm on Saturday 9th November**. In addition to lots of new gift ideas we have hot & cold refreshments and a raffle. Free Entry. Come and see the monument of Lady Georgiana, who died shortly after the birth of her twins sculpted with her.

We value your support for this event and look forward to seeing you on Saturday 9th November.

The Mausoleum is open every Sunday, 2-4pm until the end of September. No need to book.

**NB Sat. 7<sup>th</sup> Dec** Carols at the Mausoleum. It is never too early to book your place for this ever popular event!

*The Milton Mausoleum is cared for by the Churches Conservation Trust  
Milton Mausoleum, The Avenue, Milton NG22 0PW*



Ivy Cottage B&B . Main Street . Laxton . Nottinghamshire  
NG22 0NU . 01777 871254 . [www.the-goathouse.co.uk](http://www.the-goathouse.co.uk)

## VINCE DODD SERVICE & MOT

Sutton-on-Trent  
MOT Testing

☆ Servicing ☆ Repairs  
☆ Tyres ☆ Air Con

**01636 821200**

Hall Farm Stocks a Wide  
Range of Wild Bird Products,  
Accessories & More

**COFFEE LOUNGE**  
**NOW OPEN!**

Serving Coffee, Cake and Light Lunches

OPENING HOURS:  
Mon – Fri 7:30am – 5pm  
Sat 8am – 3pm  
Sun CLOSED

**THE GRAIN STORE**  
Wadnall Lane, Weston, NG23 6SY  
(Behind the Great Wall Chinese)

Tel: 01636 821232 [www.seedtofeed.co.uk](http://www.seedtofeed.co.uk)

@SeedToFeed.co.uk  
@buybirdseed  
@hallfarmweston

**07999 489624**



## Kitchen & Furniture Refurbishments

**We Spray:**

Kitchens, Free-Standing Furniture,  
Fitted Furniture, Wood, MDF & Paint Grade Vinyl

**25 Years Experience**

Contact: Darren  
Our Email: [scopesprayservices@gmail.com](mailto:scopesprayservices@gmail.com)  
Find us on Facebook: Scope Spray Services



**Mark Brisendon**  
Heating Engineer

T: 01636 678036  
M: 07734 450695

Oil boiler service,  
repair and installations



OFTEC registered

## **"FEET FIRST"**

**MOBILE  
CHIROPODY SERVICES**

**Sharon Foster**  
**M.Inst.Ch.P.**  
**HPC Registered No:**  
**CH18101**

**Telephone**  
**Mobile: 07946 587190**  
**for a home visit**



**DOG GROOMING AND TEETH CLEANING**  
**AVAILABLE IN SUTTON-ON-TRENT**

**CONTACT HANNAH: 07771631848**  
[tudorgrooming@gmail.com](mailto:tudorgrooming@gmail.com)

**TUDOR COURT, SHIRES WAY, GREAT  
NORTH ROAD, SUTTON-ON-TRENT,  
NEWARK, NG23 6PP.**

**G.R. GRIMES & SONS**  
**SOLID FUEL & GAS MERCHANTS**



***Competitive Prices***

Ring for a Quote

Tel:

**01777 228273**

## ***Stan The Sweep***

***Local Professional Vacuum  
Chimney Sweep***

*Solid Fuel, Oil and Gas, Aga,  
Stove Bricks, Glass & Rope  
supplied & fitted, Bird guards,  
Chimney liners, Pots, Specialist  
equipment for sweeping wood  
burners & liners. Certificate  
issued.*

*No Mess & fully insured  
Contact Stan Hutchinson on:*

**07831 661304**  
**01636 821466**

**Stan@StanTheSweep.co.uk**



Member of the  
guild of master  
sweeps





**Sherwood  
& Newark**

## **Travelling to Europe this summer?**

Citizens Advice gives advice on what to check before you travel.

If you are planning on travelling to the EU, Norway, Switzerland, Iceland or Liechtenstein you should:

- Check the latest travel advice on GOV.UK - there could be extra rules because of coronavirus.
- Check you've got everything you have to take if you're driving, for example a UK sticker for your car.
- Check you've got the right documents if you're taking your pet.

### **Check your passport is valid for the dates you're travelling**

You can check if your passport will be valid for your trip on GOV.UK. You'll need to search for the country you're going to and click on 'entry requirements'. Apply for your passport as early as you can.

### **Get travel insurance**

If you're a UK resident and have an existing European Health Insurance Card (EHIC), you can still use it until it expires. UK nationals, Swiss nationals or EU citizens can use an existing EHIC in Switzerland.

For Norway, Iceland or Liechtenstein you'll need to get a new one.

You might be able to apply for a new EHIC if before 1 January 2021 you fit certain criteria, available on the web site. You might also be able to apply for an EHIC if you're a family member or dependent of someone who's eligible.

You can apply for a new EHIC for free on the NHS website, up to 6 months before your existing EHIC expires. Be careful if you see other websites offering EHICs as they'll usually try to charge you.

You might be able to apply for a UK Global Health Insurance Card (GHIC) instead if:

- you don't have an EHIC
- your EHIC has expired
- you're not eligible for an EHIC

You might also be able to apply for a GHIC if you're a family member or dependent of someone who's eligible.

You can use a GHIC to get 'medically necessary' healthcare (i.e. treatment that can't wait until you return to the UK) in EU

countries (and in Switzerland if you're a UK national, Swiss national or EU citizen) at a reduced cost. In Norway, your UK passport is accepted for medically necessary healthcare.

You can apply for a GHIC for free on the NHS website.

You should still get travel insurance before your trip - even if you have an EHIC or GHIC. These won't cover the cost of travel back to your own country (repatriation) if you're ill and this can be very expensive.

### **If you have an existing illness or health issue**

Most travel insurance won't cover you for any illnesses or health issues you already have. If they do, you'll usually have to pay more. Tell your insurer if you have any existing health issues before buying insurance. If they can't cover you, they should recommend a specialist insurance company that can.

If you have an EHIC or GHIC, it might allow you to get routine medical care for existing illnesses or health issues. You should check with the healthcare provider in the country you're travelling to first. Some treatments might need to be arranged before you travel.

### **Find out if you'll be charged more to use your mobile phone**

You might have to pay more to use your mobile phone in the EU, Norway, Switzerland, Iceland or Liechtenstein. Before you go, ask your mobile phone service provider what the charges will be for using your mobile phone abroad.

Make sure you understand how to turn off mobile roaming on your phone if you're worried about extra charges. This is usually in the phone's 'settings' menu under 'mobile roaming'.

If you want to use data abroad, check with your mobile provider to see if you have a data bundle that can be used abroad. If you don't have a bundle or you've used it up, you'll be charged for data.

You can ask your mobile provider if there's a limit to how much data you can use abroad. If there's no limit, you can tell them to set a limit on how much you want to spend. Your mobile provider will tell you when you're about to reach the agreed limit.

If you require further assistance or advice contact us:

### **In person**

- Newark office Tue/Thu 9.30 - 2.30, Castle House NG24 1BY
- Ollerton office Mon/Wed 9.30 - 2.30, 5 Forest Court, NG22 9PL
- Phone our local office on 01623 861769 (you may be offered a call back)
- Website **[www.sn-ca.org.uk](http://www.sn-ca.org.uk)**

# E Gill & Sons

## *Funeral Directors*

E Gill & Sons are proud to have provided care and advice to families in the Newark and District area for over 100 years

**24 Hour Personal Care**  
**Prepaid Funeral Plans Available**

**Newark and District**

**01636 677461**



**egillandsons.co.uk**



## Plumbing and Heating

Alan Moorhouse

- Oil boiler installation, service & repair
- Oil tank installation & pipework
- Bathroom installation
- Sealed hot water systems
- Power flushing



**Email: [alsperfectplumbs@gmail.com](mailto:alsperfectplumbs@gmail.com)**

**Tel: 07854 069529**



OFTEC registered

## Advertising in 'Open Field'

Standard 1/6 page box: £30 p.a.(colour) £15 p.a.(B&W).

Larger sizes pro rata, e.g. £45 p.a. for 1/2 page (B&W)

Please contact [advertising@openfield.org.uk](mailto:advertising@openfield.org.uk) or  
call **01777 871506** for details and info on web pages / links.

# Minutes of the Parish Council Meeting held on Tuesday 21 March 2024

**Present:** S.Hill (chair), J.Hill, M.Hennell, R.Creighton, S.Rose,  
A Moorhouse, D. Sheard

## **In attendance at parish council meeting**

C.Wilson (Clerk), S.Michael (District councillor), Member of the public(x4)

1. **Apologies for absence:** There were no absences. Mr Pringle had sent apologies. Mrs Creighton had been unavoidably delayed.
2. **Declarations of interest:** Mr Sheard and Mr Rose declared interests in item 13 a i (Planning – Applications - 23/02107/OUT). There were no other declarations of interest, direct or indirect, in any items of business on the agenda.
3. **Dispensations:** None required. Mrs Creighton arrived during this item.
4. **10 Minutes public speaking:** It was reported that Mr Pringle and the Via officer had walked the whole of Laxton during which specific examples of the poor state of the roads had been drawn to their attention. Both had agreed that the condition of the roads was poor. Councillors encouraged residents to report all defects to NCC or the clerk. It was suggested that the Open Field include a link to the NCC report a fault page.  
Mrs Michael referred to the financial strain on NCC because of the high level of expenditure on child and adult social care. She also confirmed that Bar Farm is being proactively addressed by NSDC enforcement. Members of the public addressed councillors in relation to item 13 a i on the agenda (Planning – Applications - 23/02107/OUT) and referred to the following issues in particular arising out of the application:
  - a. Poor visibility for access and egress
  - b. The condition of the road
  - c. Flood risk connected with an evident watercourse within 20 metres of the site
  - d. The application states that the development will connect into the mains but there is no ability to connect at that end of Toad Lane
  - e. The adjacent farm is a working farm with grain drying facilities which make a noise which could not be restricted for adjacent residents
  - f. An old map shows a watercourse marked “trough” in the vicinity of the site.  
Councillors noted the concerns raised in particular the absence of



safe pedestrian access and pavement.

5. **Thoresby Estate report (if any):** Mrs Moorhouse reported that work has commenced on Ide Farm. The Estate had nothing further to report.
6. **Flooding – NCC presentation and Q&A:** It was **decided** that this would be deferred to the May meeting. Councillors will let Mr Sheard know the matters which they would like the NCC flood officer to cover
7. **Minutes of the Parish Council meetings held on 23 January 2023:** The minutes of the parish council meetings held on 23 January 2024 were agreed as a true record and signed by the chair.
8. **Matters arising: Item LMPC/5/24 – Thoresby Estate report** – Mr Rose reported that the meeting in relation to the Visitor Centre had taken place and that a letter of approval and a feasibility study are awaited. There were no other matters arising which were not otherwise on the agenda.
9. **Reports from district and county councillors:** Mrs Michael reported as follows:
  - a. NSDC glass recycling collections have begun
  - b. Residents of the ROB area need to opt in to the NSDC scheme if they would like to participate
  - c. Council tax is to increase by 2.99%. Efforts to keep the increase to 1.96% were overruled because of lack of numbers.
  - d. NSDC is providing an additional £95,000 for arts in the community. Again, there were insufficient numbers to defeat the proposal.
  - e. She had spoken with ROB who would collect from Moorhouse provided at least six properties wanted to participate.
10. **Reports from councillors:** Mr S Hill reported that the next SNG meeting is on 18 April 2024. He is unable to attend but Mrs Michael will be able to raise any issues of concern.

Mr Sheard has organised a litter pick for 14 April 2024. Mr Hennell will let the Young Farmers know. The pick will commence with safety briefing at 10.30 am at the Visitor Centre. There will be no refreshments this time.
11. **Annual Parish Meeting 2024 – Arrangements:** Councillors **decided** to hold the:
  1. Annual Parish Meeting at 7.00 pm on Tuesday 28 May 2024
  2. Parish Council annual meeting at 7.30 pm on Tuesday 28 May 2024.Mrs Creighton gave her apologies in advance.
12. **Property matters including sports field, lease and pavilion and Glebe Field matters (if any):** The clerk reported that the Glebe field rent had been paid. Mr J Hill will look at the new hedge which it was reported is leaning a little where it was laid. He will also attend to the fence.

The clerk reported that her research had identified a number of issues which dated from over ten years ago, were complex and required discussion. Having considered the matter, councillors **decided** to hold an on line meeting to allow sufficient time to discuss the outcome of the

clerk's research and view the various documents she had collated. In the meantime, they noted the clerk's advice that they insure the pavilion and, in view of the importance of doing so quickly, **authorised** her to take out insurance up to a maximum premium in the sum of £500.

**13. Planning matters:.**

**a. Applications:**

- i. **23/02107/OUT - New dwelling (access reserved) - Toad Lane, Laxton** – Mr Rose and Mrs Creighton declared an interest and withdrew from the meeting. Councillors discussed the application and **decided** unanimously to object on the following grounds:
  - A. The development would pose a road safety danger to vehicles and pedestrians
  - B. The immediate area already suffers from high water levels and standing water leading to a flood risk
  - C. Loss of privacy for neighbouring properties
  - D. Contrary to the application, the adjoining farm is an active working farm
  - E. The application states that the proposal is not within 20m of a watercourse. However, there is evidence that this is not correct and that the development is within 20m of a watercourse. The existence or otherwise of a watercourse must be established.
- i. **23/02039/FUL | Remove the existing roof structure and replace the damaged rafters and wallplates and replace concrete footings under the load bearing wall - Church Farm High Street Laxton NG22 0NX:** Councillors discussed the application and unanimously **agreed** that they had no objection to the proposal although they queried the accuracy of the address.
- b. **To note planning decisions by NSDC: 23/02143/LDCP – Certificate of lawful use or development (Proposal) – Toad Lane, Laxton:** Approval noted.
- c. **Great North Road Solar Park – Consultation and update –** Councillors had taken on board the JPAG questionnaire which had been distributed to the parish. They will analyse the results once available. The clerk will publish a post on the website encouraging residents to participate. Councillors unanimously **appointed** Mr Sheard and Mr J Hill to represent the council at future JPAG meetings.
- d. **Compliance:** No matters raised.

**14. Parish council use of social media:** Deferred to an additional meeting to be called in April 2024 because of the volume of important matters to be considered at this time.

**15. Defibrillator:**

- A Inspection report:** Mr J Hill reported that, there were no issues and the new batteries were with the defibrillator and would be installed.
- B Replacement:** The clerk reported that funding applications had

been made and the outcomes were awaited. It was noted that the CIL levy was available to fund any costs.

**16. Flood resilience working party – Reports and associated**

**decisions:** Mr Sheard reported that flooding issues had been considered as part of the village walk round with Mr Pringle and Via. Much of the issue was attributed to water coming off the land. Eel Lane, Toad Lane and Brockilow Hill were noted as areas which are particularly affected.

It was **agreed** that these could be addressed by the flood officer at the Annual Parish Meeting together with flooding issues at Moorhouse.

**17. Parish environment and appearance, including:**

- a. **Parish roads and pavements:** Discussed at LMPC/25/24 (10 minutes public speaking). It was noted that the hedge at Smith Farm is overgrowing the pavement. Mrs Moorhouse will let then clerk have Mr Reynolds's contact details at the Thoresby Estate office and the clerk will let the Estate know.
- b. **Bench for Moorhouse:** The bench has been installed.
- c. **2024-25 dog bin contract:** Councillors considered the contract and **authorised** the clerk to enter into the agreement on the council's behalf. Councillors discussed the number of dog bins and **agreed** that they would like two more bins for Eel Lane and South Field. They asked the clerk to request a contribution from Mr Pringle.

**18. Finance**

- a. **Financial position as at 29 February 2024:** Councillors considered and noted the clerk's report showing the precise financial position at 29 February 2024 (incorporating the 2023-24 budget figures).
- b. **Accounts for payment:** Councillors unanimously **approved** eight payments totalling £2165.81.
- c. **Community Infrastructure Levy - £1,178.89 – Proposals for use:** See LMPC/38/24 (Defibrillator – Replacement).

19. **Service faults:** None reported.

20. **Correspondence:** Councillors noted under item 20a that an alternative site had been located. All other items of correspondence noted.

21. **5 minutes public speaking time:** There was discussion of the sports field and pavilion and need for the circumstances in which it was constructed to be established and understood.

Mr Sheard will find out about how the solar farm survey response rate is being monitored.

There was discussion of using the village hall as a parish council meeting venue. Councillors **decided** to defer this for discussion at the May 2024 meeting.

The members of the public in attendance left the meeting.

22. **Agenda items for next meeting:** See above

23. **Date of next meeting:** 7.30 pm Monday 22 April 2024 at Laxton Visitor Centre.

# Egmanton Village Hall

[www.egmantonvillagehall.org.uk](http://www.egmantonvillagehall.org.uk) / 01777 871171

Please check the EVH web site or call for latest details.

- ♦ **Yoga** – with Karen Baker Mondays, 7pm - 8.15pm  
Email [karenbaker321@outlook.com](mailto:karenbaker321@outlook.com) mobile **07399 669380**
- ♦ **Pilates** - Thursdays from 5:30pm - 6.30pm with Holly Rye.  
Contact **07415436001** Email [holly-rye@hotmail.co.uk](mailto:holly-rye@hotmail.co.uk)
- ♦ **Egmanton WI** - Third Thursdays in the Hall
- ♦ **Coffee Morning: No Coffee Morning in August** 10 - 12 then every second Saturday of the month from September. All welcome.
- ♦ **Egmanton Craft & Produce Show: Saturday 7th September**  
Open to everyone. Please call the number above for your schedule

*All events appear on the web site - see above*

## Reporting Potholes

A reminder about the pot hole reporting contact details are:

[www.nottinghamshire.gov.uk/transport/roads/potholes/report-a-pothole](http://www.nottinghamshire.gov.uk/transport/roads/potholes/report-a-pothole)



Or ring Customer Services on 0300 500 8080

## Laxton Defibrillator

The defibrillator in the Visitor Centre, is always accessible as neither the Visitor Centre door nor the cabinet housing is locked. Please do remember that the defibrillator must only be used once authorised by a call to 999.

*Michael Manning*

## Booking Laxton Village Hall

The Hall is available for anyone to book and bookings are taken through the web site. Please visit:

<https://www.laxtonvh.org.uk/>

# Useful Contact Details

## Defibrillator Contacts:

Neil Randall      01777 871229 & 07710 398745, evenings and weekends  
Mark Hennell      07812 908316, evenings  
Stuart Rose      07939 228353, as required  
Jeanette Geldard      07956 959135, daytime in Kneesall,  
   evenings / weekends  
Anne-Marie & Geoff Rose      07961 933290 / 07957 991002, as required

## Police

Sgt 2949 Christian Hurley, Sherwood Neighbourhood Policing Team,  
Ollerton Police Station

PC Gary Sipson 07525 226575 or 101 x 800 7673

Email : [gary.sipson@nottinghamshire.pnn.police.uk](mailto:gary.sipson@nottinghamshire.pnn.police.uk)

PC2548 Deborah Bakin supported by  
PCSO 8524 Richard Dunn at Southwell

07595 074292

Web, showing other contacts: [www.nottinghamshire.pnn.police.uk](http://www.nottinghamshire.pnn.police.uk)

Danger to life or crime in progress	999
Otherwise police switchboard	101
Crimestoppers (anonymous crime reports)	0800 555111

## Medical

Tuxford Medical Centre	01777 870203
Sutton-on-Trent Surgery	01636 821023
Ollerton Surgery - Middleton Lodge Practice	01623 703266
Newark Hospital	01636 681681
Bassetlaw Hospital	01909 500990
King's Mill Hospital	01623 622515

**Cardiac Arrest? Say “Alexa Activate Emergency CPR” to an Alexa device**

Fire Safety Advice (Tuxford Fire Station)      01777 870381  
MP Mr Robert Jenrick: [robert.jenrick.mp@parliament.uk](mailto:robert.jenrick.mp@parliament.uk) 01636 612 837  
County Councillor: [cllr.mike.pringle@nottsgov.uk](mailto:cllr.mike.pringle@nottsgov.uk) 0115 977 5661  
Parish Council website: [www.laxtonandmoorhouseparishcouncil.co.uk](http://www.laxtonandmoorhouseparishcouncil.co.uk)



# **Laxton History Group**

Cordially invite both members &  
friends of Laxton to join them

for **Afternoon Tea** on  
**Wednesday 21<sup>st</sup> August 2024**  
**2pm - 4 pm**

**Venue: Orchard View,  
Cross Hill, Laxton**

RSVP for catering

**Text or ring Helen 07905 161392**

**David & Helen, 'Orchard View', Cross Hill, Laxton**  
have kindly agreed to host a  
**social event for the friends of & villagers**  
**of Laxton**



in their garden on the evening of  
**Saturday 10<sup>th</sup> Aug 2024**



Pimms, BBQ, salads, strawberries & cream.

**£10, 4 pm start, (not for profit) BBQ from 5pm**

Please bring chairs or picnic blankets. Help us to be  
eco-friendly by bringing picnic ware, glasses & cutlery

Tickets to be bought in advance please from  
**Helen 07905 161392 'Orchard View'**  
**or Daniel 07507 880241 'Hollybush'**